

# Steotchalong 2016: The Penultimate Pattern



**Author:** Emily & Matt Fitzpatrick  
**Copyright:** Steotch Fine Needleart, LLC  
**Website:** steotch.com  
**Fabric:** 16 ct aida  
**Grid Size:** 113W x 82H  
**Design Area:** 7.06" x 5.13" (113 x 82 stitches)

## Legend:

	[2] DMC 167*	yellow beige - vy dk		[2] DMC 839*	beige brown - dk		[2] DMC 950	desert sand - lt
	[2] DMC 407	desert sand - dk		[2] DMC 839*	beige brown - dk		[2] DMC 3371	black brown
	[2] DMC 420	hazel nut brown - dk		[2] DMC 839*	beige brown - dk		[2] DMC 3770*	tawny - vy lt
	[2] DMC 420*	hazel nut brown - dk		[2] DMC 839*	beige brown - dk		[2] DMC 3774*	desert sand - vy lt
	[2] DMC 420*	hazel nut brown - dk		[2] DMC 841*	beige brown - lt		[2] DMC 3777	terra cotta - vy dk
	[2] DMC 420*	hazel nut brown - dk		[2] DMC 842	beige brown - vy lt		[2] DMC 3781*	mocha brown - dk
	[2] DMC 422*	hazel nut brown - lt		[2] DMC 842*	beige brown - vy lt		[2] DMC 3782	mocha brown - lt
	[2] DMC 422*	hazel nut brown - lt		[2] DMC 898*	coffee brown - vy dk		[2] DMC 3790	beige gray - ul dk
	[2] DMC 422*	hazel nut brown - lt		[2] DMC 898*	coffee brown - vy dk		[2] DMC 3863*	mocha beige - md
	[2] DMC 422*	hazel nut brown - lt		[2] DMC 898*	coffee brown - vy dk		[2] DMC 3863*	mocha beige - md
	[2] DMC 422*	hazel nut brown - lt		[2] DMC 938*	coffee brown - ul dk		[2] DMC 3864*	mocha beige - lt
	[2] DMC 645	beaver gray - vy dk		[2] DMC 938*	coffee brown - ul dk		[2] DMC 3864	mocha beige - lt
	[2] DMC 434*	brown - lt		[2] DMC 938*	coffee brown - ul dk		[2] DMC 3864*	mocha beige - lt
	[2] DMC 712	cream		[2] DMC 945*	tawny - md		[2] DMC 3864*	mocha beige - lt
	[2] DMC 677*	old gold - vy lt		[2] DMC 945*	tawny - md		[2] DMC Ecru	ecru
	[2] DMC 801*	coffee brown - dk		[2] DMC 945*	tawny - md		[2] DMC E3821	Light Gold
							[2] DMC 3820	straw - dk

## (\*) Blended Entries:

	DMC-167 & DMC-647	(DMC Cotton-yellow beige - vy dk blended with DMC Cotton-beaver gray - md)
	DMC-420 & DMC-167	(DMC Cotton-hazel nut brown - dk blended with DMC Cotton-yellow beige - vy dk)
	DMC-420 & DMC-646	(DMC Cotton-hazel nut brown - dk blended with DMC Cotton-beaver gray - dk)
	DMC-420 & DMC-434	(DMC Cotton-hazel nut brown - dk blended with DMC Cotton-brown - lt)
	DMC-422 & DMC-739	(DMC Cotton-hazel nut brown - lt blended with DMC Cotton-tan - ul vy lt)
	DMC-422 & DMC-646	(DMC Cotton-hazel nut brown - lt blended with DMC Cotton-beaver gray - dk)
	DMC-422 & DMC-738	(DMC Cotton-hazel nut brown - lt blended with DMC Cotton-tan - vy lt)
	DMC-422 & DMC-3023	(DMC Cotton-hazel nut brown - lt blended with DMC Cotton-brown gray - lt)
	DMC-422 & DMC-167	(DMC Cotton-hazel nut brown - lt blended with DMC Cotton-yellow beige - vy dk)
	DMC-434 & DMC-646	(DMC Cotton-brown - lt blended with DMC Cotton-beaver gray - dk)
	DMC-677 & DMC-739	(DMC Cotton-old gold - vy lt blended with DMC Cotton-tan - ul vy lt)
	DMC-801 & DMC-433	(DMC Cotton-coffee brown - dk blended with DMC Cotton-brown - md)
	DMC-839 & DMC-3021	(DMC Cotton-beige brown - dk blended with DMC Cotton-brown gray - vy dk)
	DMC-839 & DMC-645	(DMC Cotton-beige brown - dk blended with DMC Cotton-beaver gray - vy dk)
	DMC-839 & DMC-647	(DMC Cotton-beige brown - dk blended with DMC Cotton-beaver gray - md)
	DMC-839 & DMC-841	(DMC Cotton-beige brown - dk blended with DMC Cotton-beige brown - lt)
	DMC-841 & DMC-938	(DMC Cotton-beige brown - lt blended with DMC Cotton-coffee brown - ul dk)
	DMC-842 & DMC-712	(DMC Cotton-beige brown - vy lt blended with DMC Cotton-cream)
	DMC-898 & DMC-3371	(DMC Cotton-coffee brown - vy dk blended with DMC Cotton-black brown)
	DMC-898 & DMC-3021	(DMC Cotton-coffee brown - vy dk blended with DMC Cotton-brown gray - vy dk)
	DMC-898 & DMC-3031	(DMC Cotton-coffee brown - vy dk blended with DMC Cotton-mocha brown - vy dk)
	DMC-938 & DMC-647	(DMC Cotton-coffee brown - ul dk blended with DMC Cotton-beaver gray - md)
	DMC-938 & DMC-3021	(DMC Cotton-coffee brown - ul dk blended with DMC Cotton-brown gray - vy dk)
	DMC-938 & DMC-645	(DMC Cotton-coffee brown - ul dk blended with DMC Cotton-beaver gray - vy dk)
	DMC-945 & DMC-3864	(DMC Cotton-tawny - md blended with DMC Cotton-mocha beige - lt)
	DMC-945 & DMC-839	(DMC Cotton-tawny - md blended with DMC Cotton-beige brown - dk)
	DMC-945 & DMC-543	(DMC Cotton-tawny - md blended with DMC Cotton-beige brown - ul vy lt)
	DMC-3770 & DMC-543	(DMC Cotton-tawny - vy lt blended with DMC Cotton-beige brown - ul vy lt)
	DMC-3774 & DMC-543	(DMC Cotton-desert sand - vy lt blended with DMC Cotton-beige brown - ul vy lt)
	DMC-3781 & DMC-841	(DMC Cotton-mocha brown - dk blended with DMC Cotton-beige brown - lt)
	DMC-3863 & DMC-840	(DMC Cotton-mocha beige - md blended with DMC Cotton-beige brown - md)
	DMC-3863 & DMC-841	(DMC Cotton-mocha beige - md blended with DMC Cotton-beige brown - lt)
	DMC-3864 & DMC-3790	(DMC Cotton-mocha beige - lt blended with DMC Cotton-beige gray - ul dk)
	DMC-3864 & DMC-841	(DMC Cotton-mocha beige - lt blended with DMC Cotton-beige brown - lt)
	DMC-3864 & DMC-898	(DMC Cotton-mocha beige - lt blended with DMC Cotton-coffee brown - vy dk)

## Backstitch Lines:

	DMC-167*	yellow beige - vy dk		DMC-839	beige brown - dk		DMC-3781*	mocha brown - dk
	DMC-167	yellow beige - vy dk		DMC-840	beige brown - md		DMC-3781	mocha brown - dk
	DMC-407	desert sand - dk		DMC-841	beige brown - lt		DMC-3790	beige gray - ul dk
	DMC-433	brown - md		DMC-938	coffee brown - ul dk		DMC-3864	mocha beige - lt
	DMC-434	brown - lt		DMC-3031	mocha brown - vy dk		DMC-Ecru	ecru
	DMC-647	beaver gray - md		DMC-3371	black brown			

## French Knots:

⊙ DMC-3371 black brown

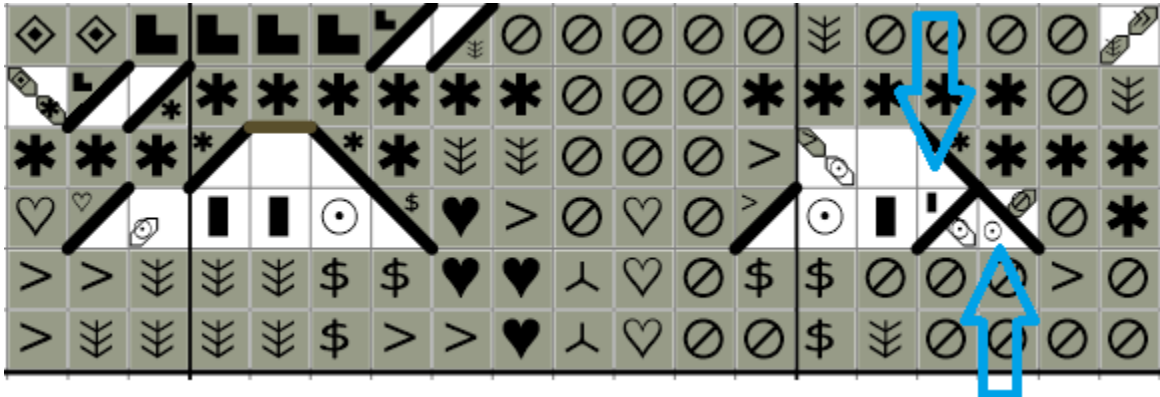
## WELCOME TO WEEK NINE!!!

This week, we'll be finishing the eyes and adding the backstitching around the face. Depending on the thickness of the stitching on the backside of your sampler, you might find that an embroidery (sharp) needle helps you with the finer detail work here, especially the French knots. Let's turn this baby right side up and get started! And may The Seven have mercy on your soul.

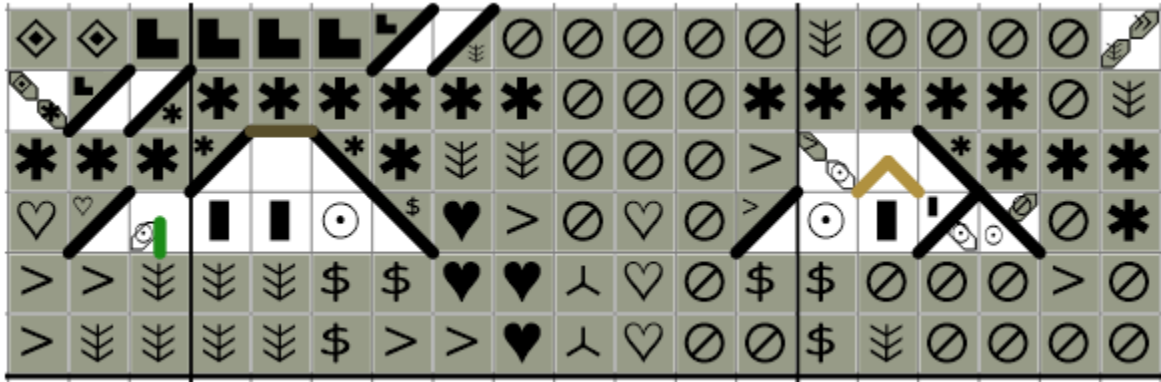


### THE EYES

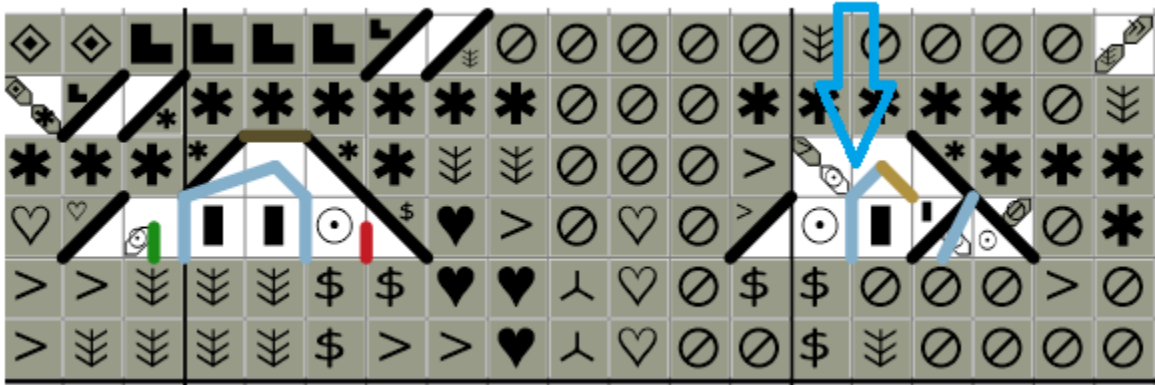
**Step 1:** Add the cross stitches. Note the two 3/4 Stitches.



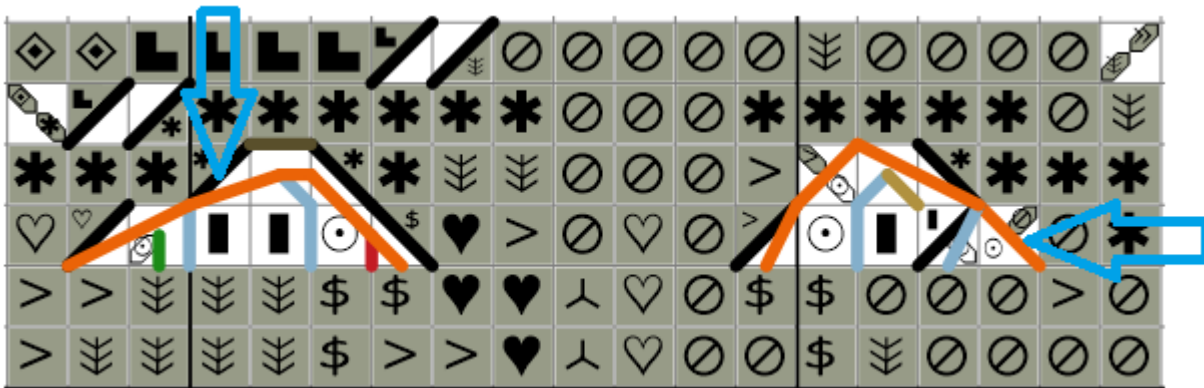
**Step 2:** Using the same threads, backstitch these stitches (using two threads of ECRU on the left eye and your blended 167+647 on the right eye). We coded the ECRU in green to make it visible on the chart.



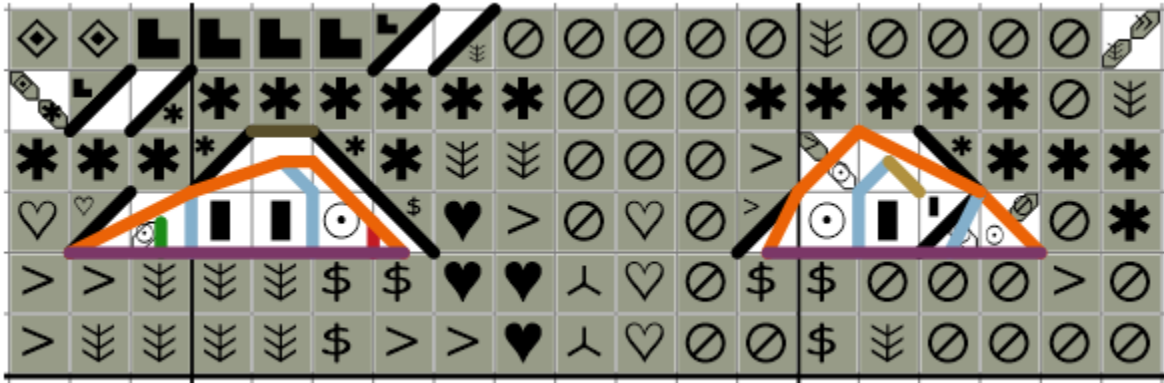
**Step 3:** Backstitch the following, using two threads of 407 for the red and one thread of 647 for the light blue. Be sure that the stitches for 647 (around the pupil) lay on the outside of the stitching you just did with 167+647 on the right eye.



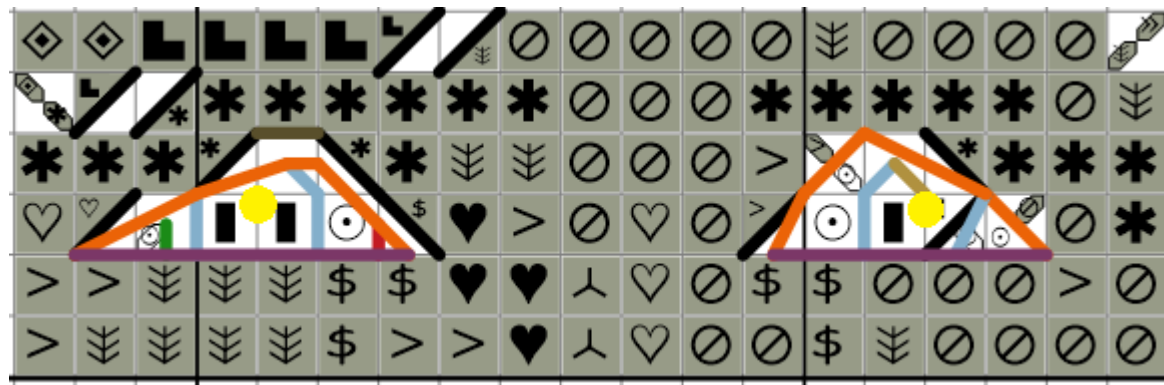
**Step 4:** Using one thread of 3790, backstitch the upper eyelids. On the left eye, be sure the thread lays outside of the pupil (that you just stitched- the light blue [647]), and on the right eye, be sure the thread lays outside of the 3/4 Stitch in ECRU.



**Step 5:** Using one thread of 3781, backstitch the lower eyelids.



**Step 6:** Using one thread, place small french knots in 3371 where indicated in the picture. If you prefer, you may embroider small dashes in place of the knots.



## **THE OUTLINING**

Use the following key to complete the backstitching using one thread (unless otherwise noted).

Red: 167 yellow beige - vy dk

Orange: 433 brown - md

Yellow: 841 beige brown - lt

Green: 434 brown - lt

Light Blue: 840 beige brown - md

Navy Blue: 938 coffee brown - ul dk

Lavender (the lips): 3031 mocha brown - vy dk

Purple: 3790 beige gray - ul dk

Fuschia (the lips): 3864 mocha beige - lt

Brown: 3781 mocha brown - dk

Black (the nostrils): 3371 black brown

Pink: 839 beige brown - dk

### **Notes:**

Don't miss the change in color (red/orange) around the hairline.

The backstitched line down the center of the forehead (3781) is made with two threads.

If needed, you may add an extra line of backstitching inside the nostrils (3371) to ensure they are filled in.



