

# Steotchalong 2016 - Pattern 4

**Author:** Emily & Matt Fitzpatrick  
**Copyright:** Steotch Fine Needleart, LLC  
**Website:** steotch.com  
**Fabric:** 16 ct  
**Grid Size:** 113W x 82H  
**Design Area:** 7.06" x 5.00" (113 x 80 stitches)



## Legend:

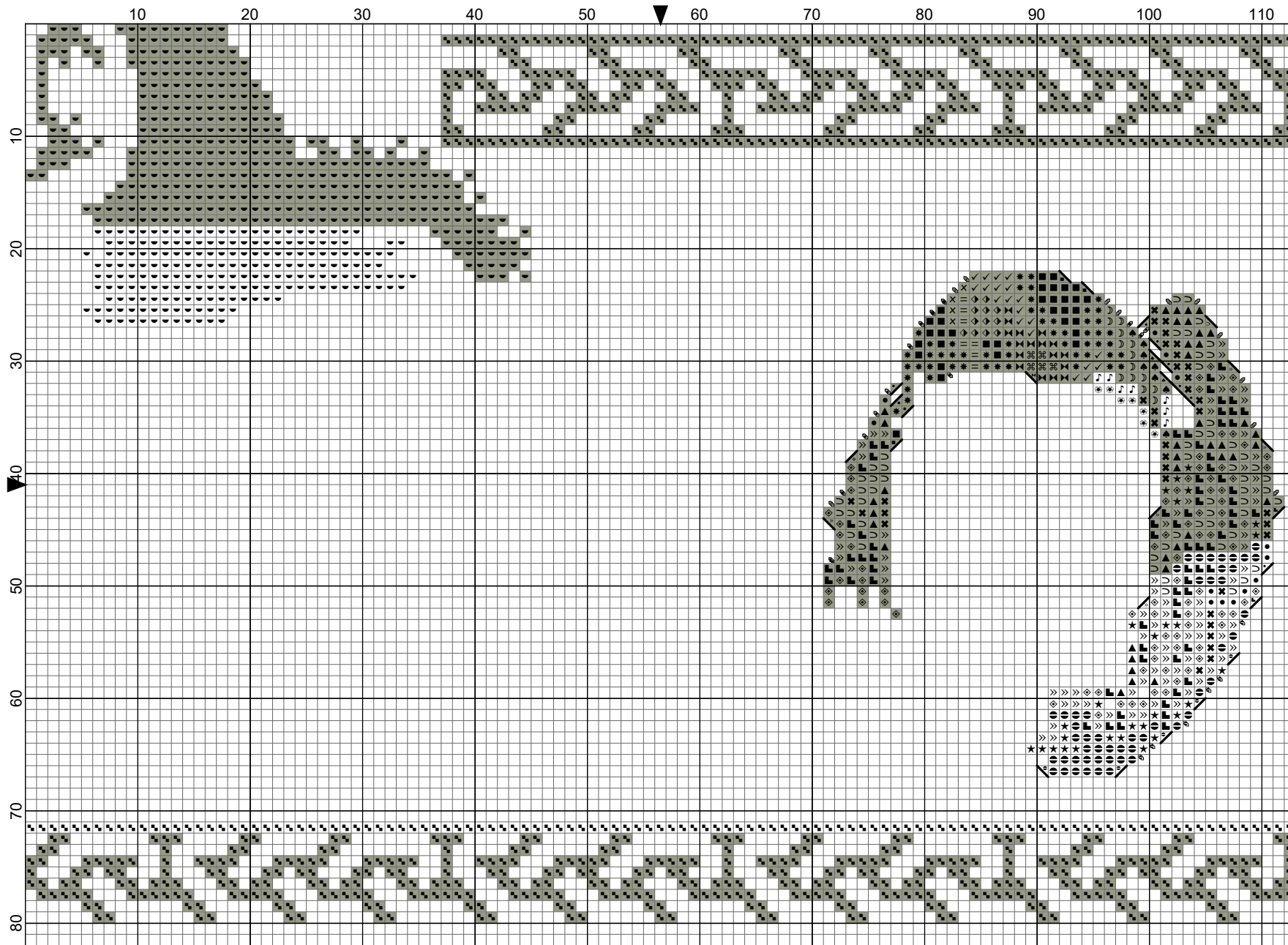
[2] DMC 420* hazel nut brown - dk	[2] DMC 677* old gold - vy lt	[2] DMC 841* beige brown - lt	[2] DMC 938* coffee brown - ul dk
[2] DMC 420* hazel nut brown - dk	[2] DMC 839* beige brown - dk	[2] DMC 898* coffee brown - vy dk	[2] DMC 3371 black brown
[2] DMC 420 hazel nut brown - dk	[2] DMC 801* coffee brown - dk	[2] DMC 898* coffee brown - vy dk	[2] DMC 3864* mocha beige - lt
[2] DMC 422* hazel nut brown - lt	[2] DMC 839* beige brown - dk	[2] DMC 898* coffee brown - vy dk	[2] DMC 3864* mocha beige - lt
[2] DMC 422* hazel nut brown - lt	[2] DMC 839* beige brown - dk	[2] DMC 938* coffee brown - ul dk	[2] DLE E3821 Light Gold
[2] DMC 422* hazel nut brown - lt	[2] DMC 839* beige brown - dk	[2] DMC 938* coffee brown - ul dk	OR... DMC 3820 straw - dk

## (\*) Blended Entries:

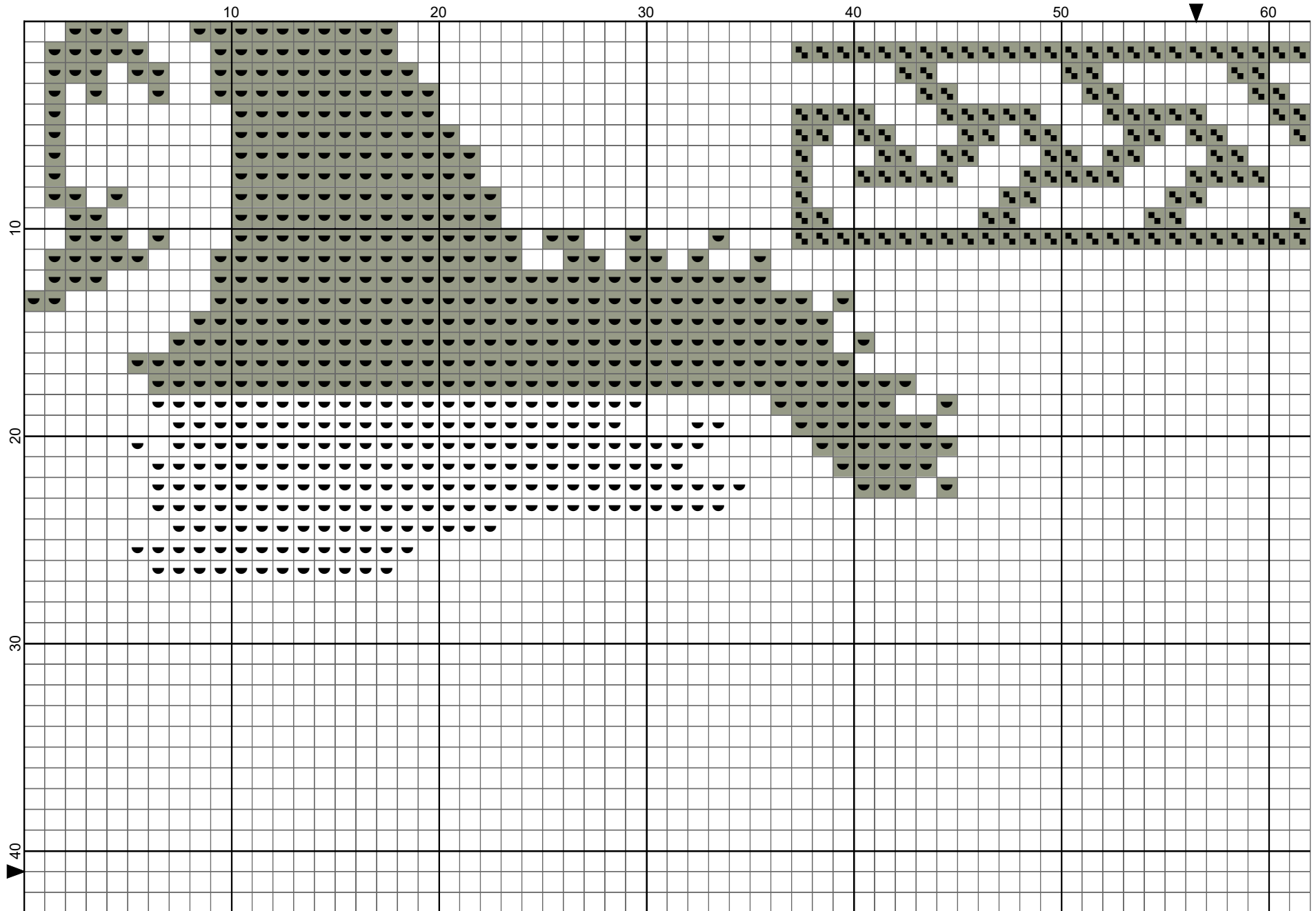
DMC-420 & DMC-167	(DMC Cotton-hazel nut brown - dk blended with DMC Cotton-yellow beige - vy dk)
DMC-420 & DMC-434	(DMC Cotton-hazel nut brown - dk blended with DMC Cotton-brown - lt)
DMC-422 & DMC-738	(DMC Cotton-hazel nut brown - lt blended with DMC Cotton-tan - vy lt)
DMC-422 & DMC-739	(DMC Cotton-hazel nut brown - lt blended with DMC Cotton-tan - ul vy lt)
DMC-422 & DMC-167	(DMC Cotton-hazel nut brown - lt blended with DMC Cotton-yellow beige - vy dk)
DMC-677 & DMC-739	(DMC Cotton-old gold - vy lt blended with DMC Cotton-tan - ul vy lt)
DMC-839 & DMC-841	(DMC Cotton-beige brown - dk blended with DMC Cotton-beige brown - lt)
DMC-801 & DMC-433	(DMC Cotton-coffee brown - dk blended with DMC Cotton-brown - md)
DMC-839 & DMC-3021	(DMC Cotton-beige brown - dk blended with DMC Cotton-brown gray - vy dk)
DMC-839 & DMC-647	(DMC Cotton-beige brown - dk blended with DMC Cotton-beaver gray - md)
DMC-839 & DMC-645	(DMC Cotton-beige brown - dk blended with DMC Cotton-beaver gray - vy dk)
DMC-841 & DMC-938	(DMC Cotton-beige brown - lt blended with DMC Cotton-coffee brown - ul dk)
DMC-898 & DMC-3021	(DMC Cotton-coffee brown - vy dk blended with DMC Cotton-brown gray - vy dk)
DMC-898 & DMC-3371	(DMC Cotton-coffee brown - vy dk blended with DMC Cotton-black brown)
DMC-898 & DMC-3031	(DMC Cotton-coffee brown - vy dk blended with DMC Cotton-mocha brown - vy dk)
DMC-938 & DMC-647	(DMC Cotton-coffee brown - ul dk blended with DMC Cotton-beaver gray - md)
DMC-938 & DMC-645	(DMC Cotton-coffee brown - ul dk blended with DMC Cotton-beaver gray - vy dk)
DMC-938 & DMC-3021	(DMC Cotton-coffee brown - ul dk blended with DMC Cotton-brown gray - vy dk)
DMC-3864 & DMC-898	(DMC Cotton-mocha beige - lt blended with DMC Cotton-coffee brown - vy dk)
DMC-3864 & DMC-3790	(DMC Cotton-mocha beige - lt blended with DMC Cotton-beige gray - ul dk)



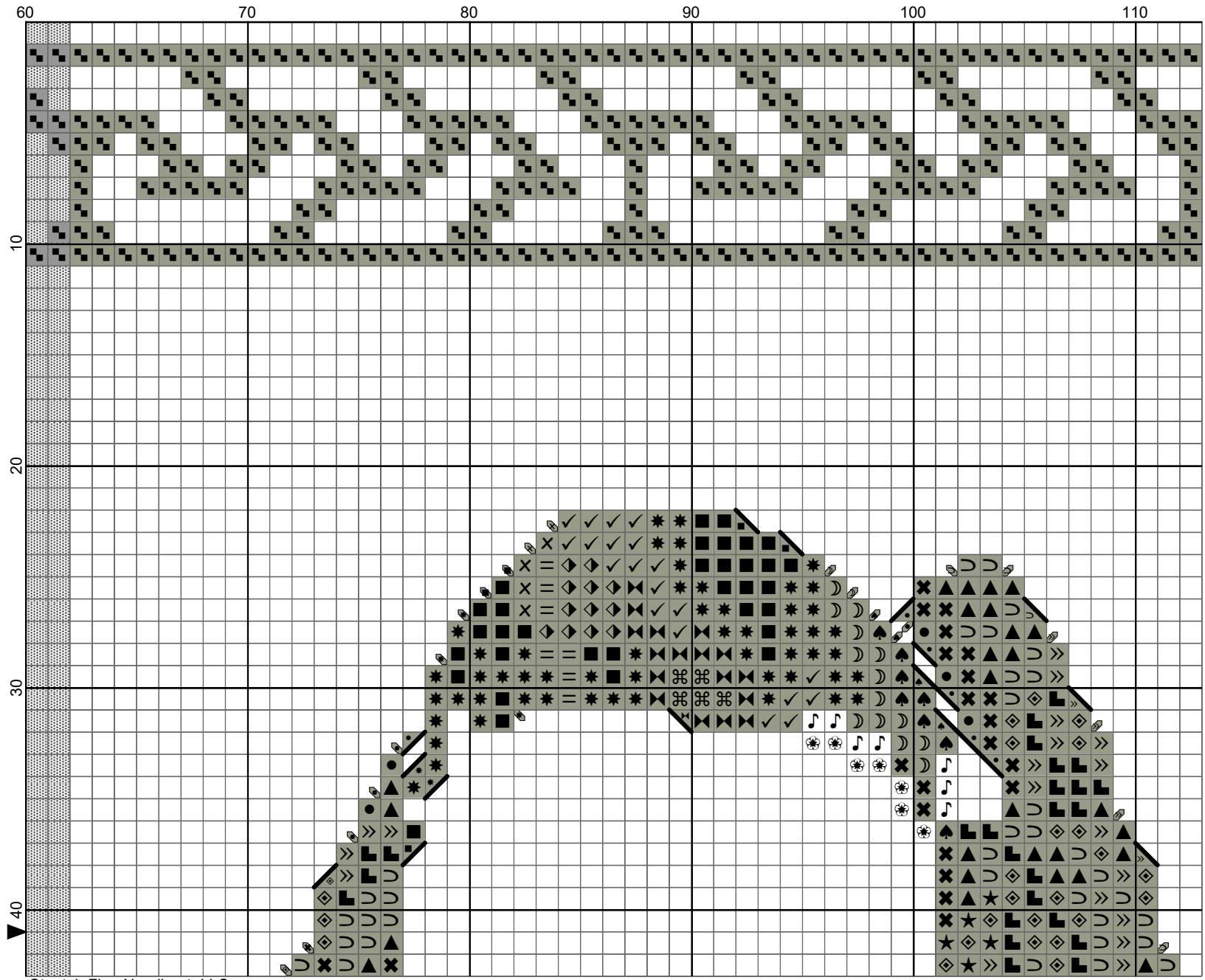
Stotchalong 2016 - Pattern 4 by Emily & Matt Fitzpatrick



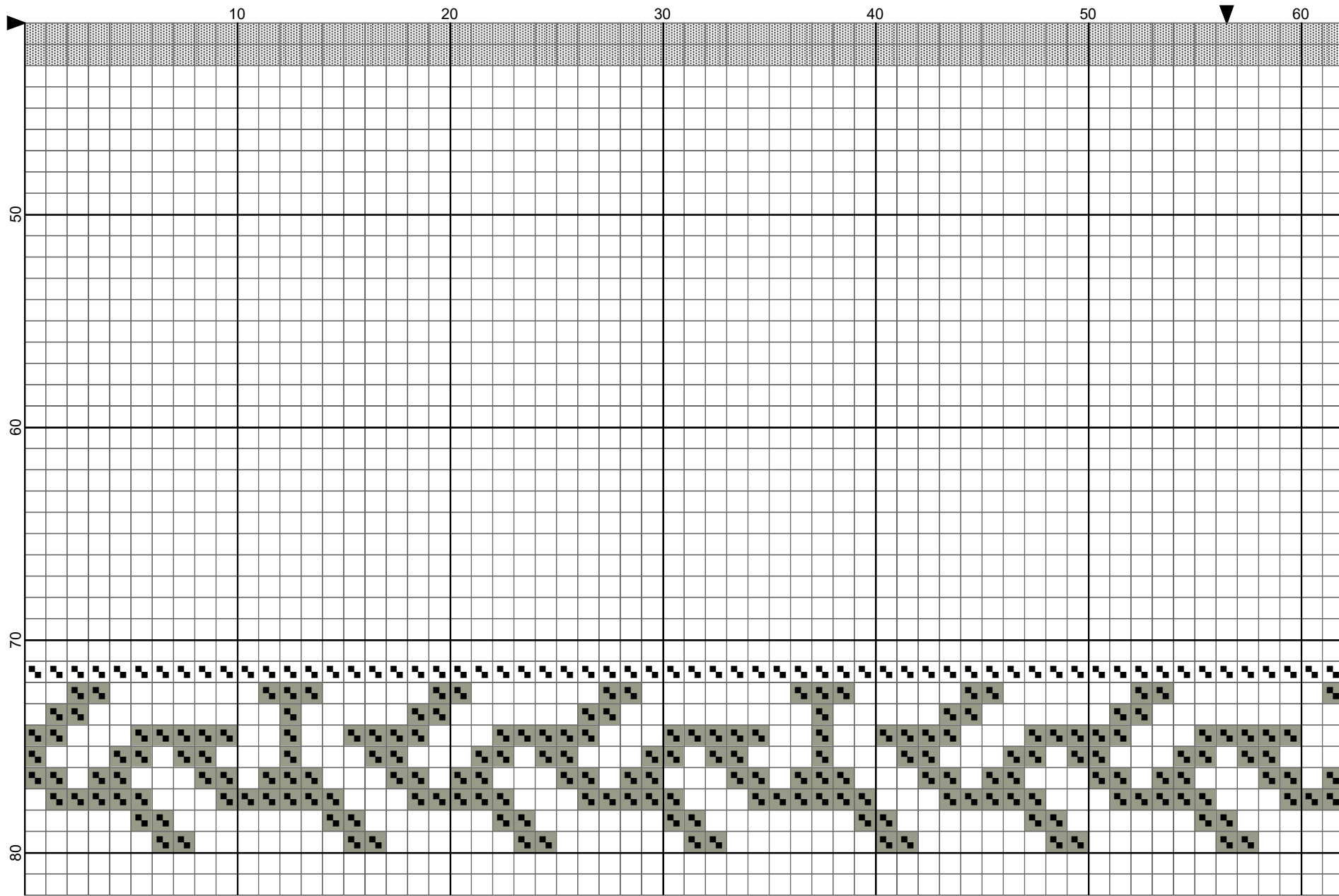
Stotch Fine Needleart, LLC



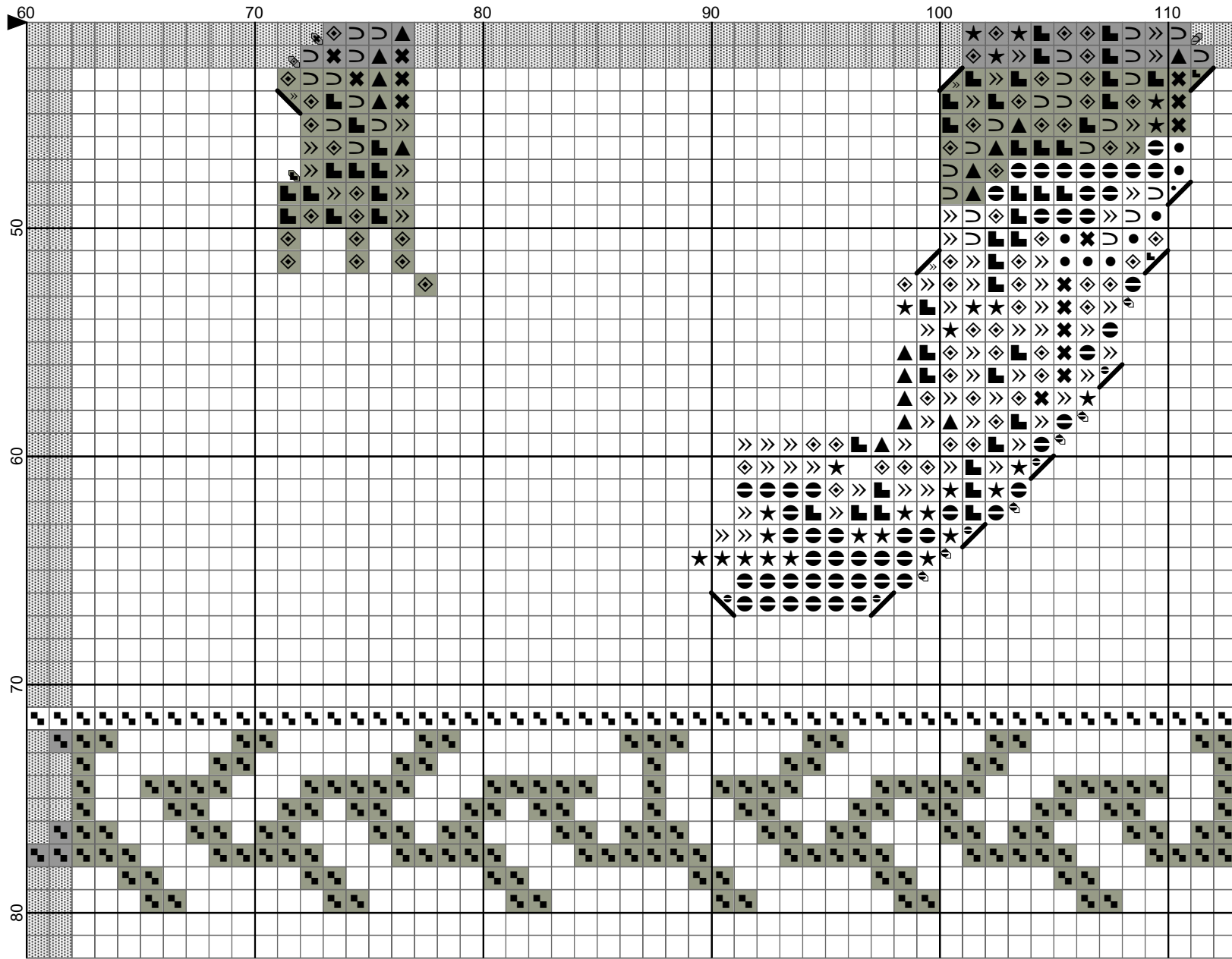
Steotchalong 2016 - Pattern 4 by Emily & Matt Fitzpatrick



Steotch Fine Needleart, LLC



Stotchalong 2016 - Pattern 4 by Emily & Matt Fitzpatrick



Stotch Fine Needleart, LLC