

Steotchalong 4: Pattern 8

Author: Emily & Matt Fitzpatrick
Copyright: Steotch Fine Needleart, LLC
Website: steotch.com
Fabric: 16 ct aida
Grid Size: 113W x 82H
Design Area: 7.06" x 5.13" (113 x 82 stitches)



Legend:

[2] DMC 407 desert sand - dk	[2] DMC 677* old gold - vy lt	[2] DMC 938* coffee brown - ul dk	[2] DMC 3781* mocha brown - dk
[2] DMC 420* hazel nut brown - dk	[2] DMC 801* coffee brown - dk	[2] DMC 898* coffee brown - vy dk	[2] DMC 3782 mocha brown - lt
[2] DMC 420* hazel nut brown - dk	[2] DMC 712 cream	[2] DMC 938* coffee brown - ul dk	[2] DMC 3790 beige gray - ul dk
[2] DMC 420* hazel nut brown - dk	[2] DMC 839* beige brown - dk	[2] DMC 945* tawny - md	[2] DMC 3863* mocha beige - md
[2] DMC 422* hazel nut brown - lt	[2] DMC 839* beige brown - dk	[2] DMC 938* coffee brown - ul dk	[2] DMC 3863* mocha beige - md
[2] DMC 420 hazel nut brown - dk	[2] DMC 839* beige brown - dk	[2] DMC 945* tawny - md	[2] DMC 3864 mocha beige - lt
[2] DMC 422* hazel nut brown - lt	[2] DMC 839* beige brown - dk	[2] DMC 945* tawny - md	[2] DMC 3864* mocha beige - lt
[2] DMC 422* hazel nut brown - lt	[2] DMC 841* beige brown - lt	[2] DMC 950 desert sand - lt	[2] DMC 3864* mocha beige - lt
[2] DMC 422* hazel nut brown - lt	[2] DMC 842* beige brown - vy lt	[2] DMC 3371 black brown	[2] DMC 3864* mocha beige - lt
[2] DMC 422* hazel nut brown - lt	[2] DMC 842 beige brown - vy lt	[2] DMC 3770* tawny - vy lt	[2] DMC 3864* mocha beige - lt
[2] DMC 645 beaver gray - vy dk	[2] DMC 898* coffee brown - vy dk	[2] DMC 3774* desert sand - vy lt	[2] DLE E3821 Light Gold
[2] DMC 434* brown - lt	[2] DMC 898* coffee brown - vy dk	[2] DMC 3777 terra cotta - vy dk	OR... DMC 3820 straw - dk

(*) Blended Entries:

DMC-420 & DMC-646 (DMC Cotton-hazel nut brown - dk blended with DMC Cotton-beaver gray - dk)
DMC-420 & DMC-167 (DMC Cotton-hazel nut brown - dk blended with DMC Cotton-yellow beige - vy dk)
DMC-420 & DMC-434 (DMC Cotton-hazel nut brown - dk blended with DMC Cotton-brown - lt)
DMC-422 & DMC-739 (DMC Cotton-hazel nut brown - lt blended with DMC Cotton-tan - ul vy lt)
DMC-422 & DMC-646 (DMC Cotton-hazel nut brown - lt blended with DMC Cotton-beaver gray - dk)
DMC-422 & DMC-3023 (DMC Cotton-hazel nut brown - lt blended with DMC Cotton-brown gray - lt)
DMC-422 & DMC-738 (DMC Cotton-hazel nut brown - lt blended with DMC Cotton-tan - vy lt)
DMC-422 & DMC-167 (DMC Cotton-hazel nut brown - lt blended with DMC Cotton-yellow beige - vy dk)
DMC-434 & DMC-646 (DMC Cotton-brown - lt blended with DMC Cotton-beaver gray - dk)
DMC-677 & DMC-739 (DMC Cotton-old gold - vy lt blended with DMC Cotton-tan - ul vy lt)
DMC-801 & DMC-433 (DMC Cotton-coffee brown - dk blended with DMC Cotton-brown - md)
DMC-839 & DMC-3021 (DMC Cotton-beige brown - dk blended with DMC Cotton-brown gray - vy dk)
DMC-839 & DMC-645 (DMC Cotton-beige brown - dk blended with DMC Cotton-beaver gray - vy dk)
DMC-839 & DMC-841 (DMC Cotton-beige brown - dk blended with DMC Cotton-beige brown - lt)
DMC-839 & DMC-647 (DMC Cotton-beige brown - dk blended with DMC Cotton-beaver gray - md)
DMC-841 & DMC-938 (DMC Cotton-beige brown - lt blended with DMC Cotton-coffee brown - ul dk)
DMC-842 & DMC-712 (DMC Cotton-beige brown - vy lt blended with DMC Cotton-cream)
DMC-898 & DMC-3371 (DMC Cotton-coffee brown - vy dk blended with DMC Cotton-black brown)
DMC-898 & DMC-3031 (DMC Cotton-coffee brown - vy dk blended with DMC Cotton-mocha brown - vy dk)
DMC-938 & DMC-645 (DMC Cotton-coffee brown - ul dk blended with DMC Cotton-beaver gray - vy dk)
DMC-898 & DMC-3021 (DMC Cotton-coffee brown - vy dk blended with DMC Cotton-brown gray - vy dk)
DMC-938 & DMC-647 (DMC Cotton-coffee brown - ul dk blended with DMC Cotton-beaver gray - md)
DMC-945 & DMC-3864 (DMC Cotton-tawny - md blended with DMC Cotton-mocha beige - lt)
DMC-938 & DMC-3021 (DMC Cotton-coffee brown - ul dk blended with DMC Cotton-brown gray - vy dk)
DMC-945 & DMC-543 (DMC Cotton-tawny - md blended with DMC Cotton-beige brown - ul vy lt)
DMC-945 & DMC-839 (DMC Cotton-tawny - md blended with DMC Cotton-beige brown - dk)
DMC-3770 & DMC-543 (DMC Cotton-tawny - vy lt blended with DMC Cotton-beige brown - ul vy lt)
DMC-3774 & DMC-543 (DMC Cotton-desert sand - vy lt blended with DMC Cotton-beige brown - ul vy lt)

- ☒ DMC-3781 & DMC-841 (DMC Cotton-mocha brown - dk blended with DMC Cotton-beige brown - lt)
- ♥ DMC-3863 & DMC-840 (DMC Cotton-mocha beige - md blended with DMC Cotton-beige brown - md)
- ☒ DMC-3863 & DMC-841 (DMC Cotton-mocha beige - md blended with DMC Cotton-beige brown - lt)
- ☒ DMC-3864 & DMC-898 (DMC Cotton-mocha beige - lt blended with DMC Cotton-coffee brown - vy dk)
- > DMC-3864 & DMC-841 (DMC Cotton-mocha beige - lt blended with DMC Cotton-beige brown - lt)
- ☒ DMC-3864 & DMC-3790 (DMC Cotton-mocha beige - lt blended with DMC Cotton-beige gray - ul dk)

Backstitch Lines:

— DMC-712 cream

— DMC-3781+841 mocha brown – dk blended with beige brown - lt

When you're not sure you understand the latest memes but you need to come up with a joke for your cross stitch pattern.



Special Notes for 2016 Steotchalong Pattern 8

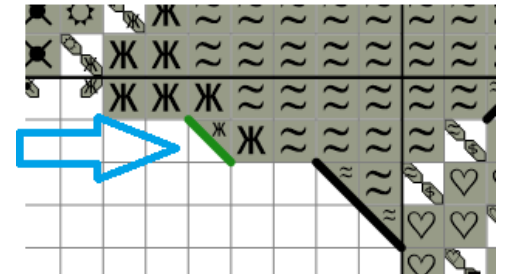
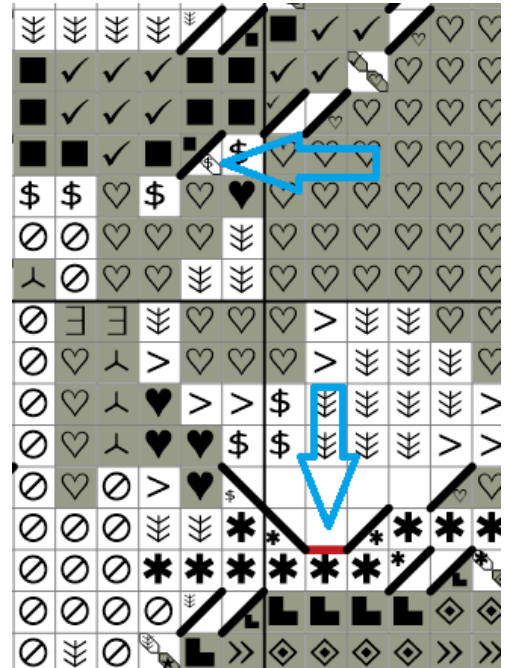
Well, we made it to the last of the gray and white patterns, and the final metallic stitches. Next week, we'll finish the detail work, and the following week, we'll add text. But for now, here are three things you'll want to note on this pattern--

At the top arrow, you'll see the "\$" quarter stitch. It's a little unusual, on this pattern, to see quarter stitches paired with 3/4 stitches in a single square. Just go with it.

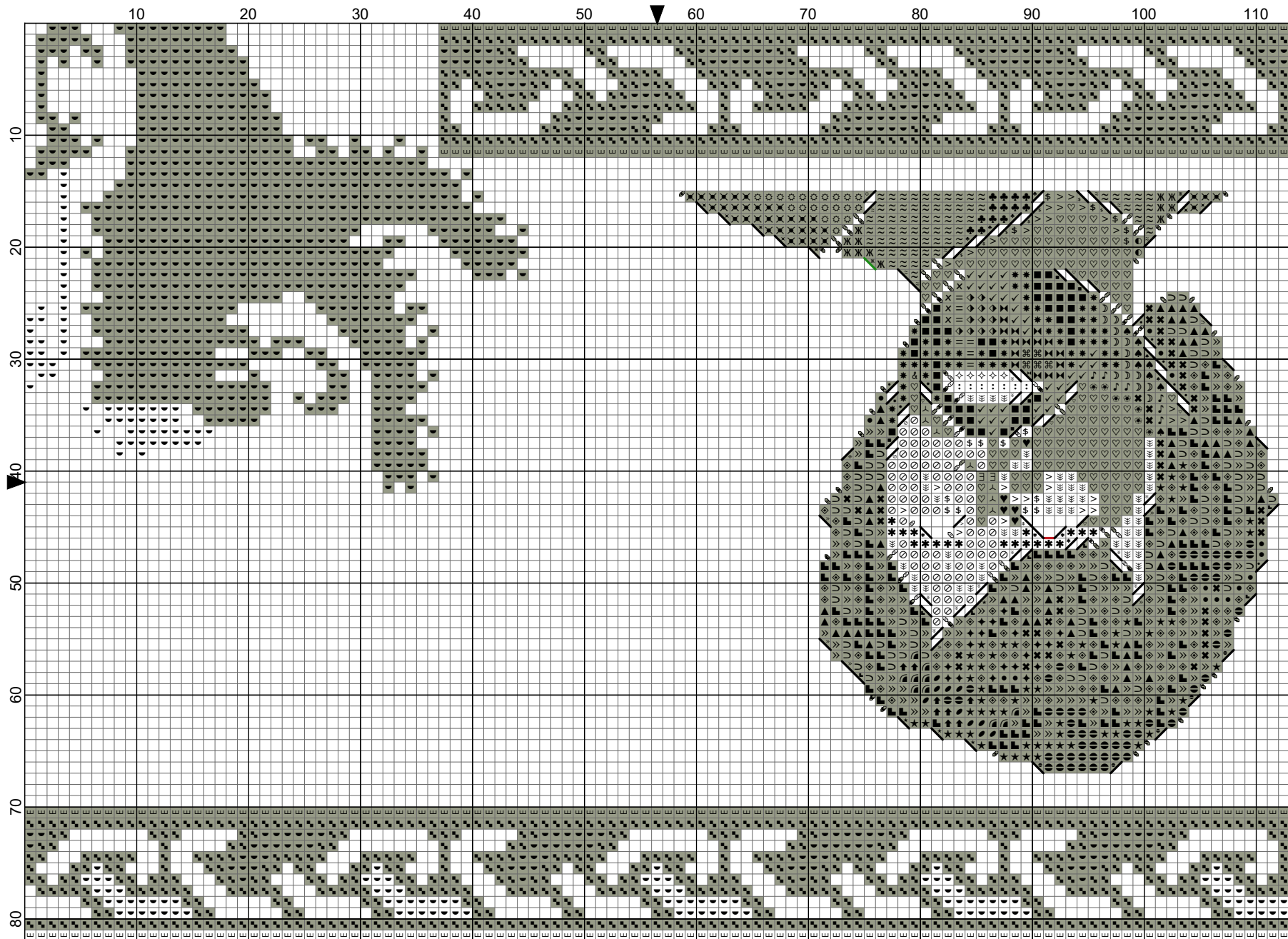
At the middle arrow, you'll spot a single line of red along the edge of a square. This is meant to indicate a single backstitch. Use the same color as the asterisk "*" in the adjacent box (3781+841) to make a single backstitch using two threads.

Back in week 6, there was a 3/4 stitch on the shoulder line that did not have the line across the square, so you might have stitched it as a quarter stitch. Eagle eye stitcher, Rachel, spotted it for us, so if you didn't make a 3/4 stitch the first time, this is your chance. Make a half stitch/backstitch where the green line indicates, using two strands of 712, Cream.

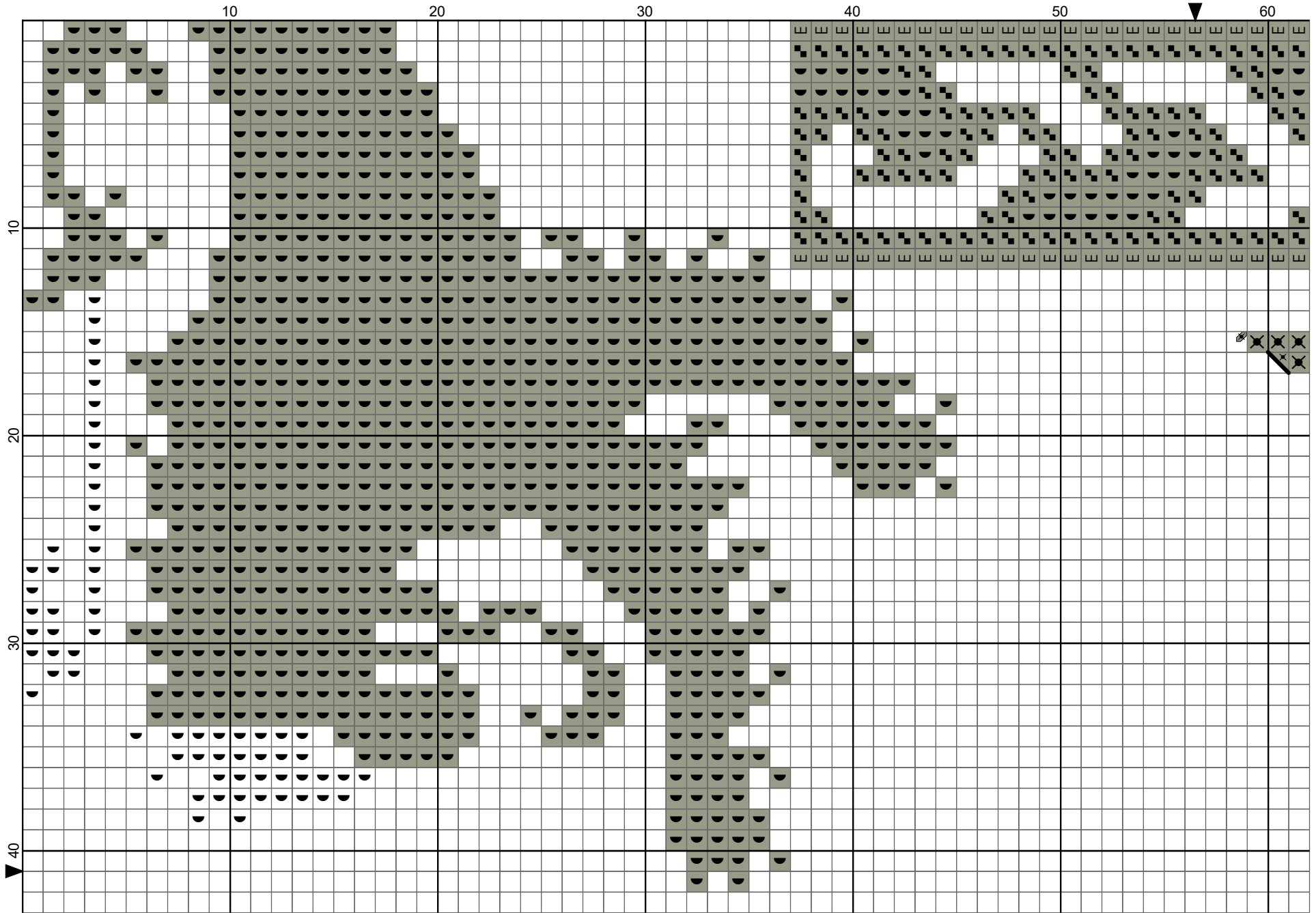
And now you can save the rest of the backstitching for next week!



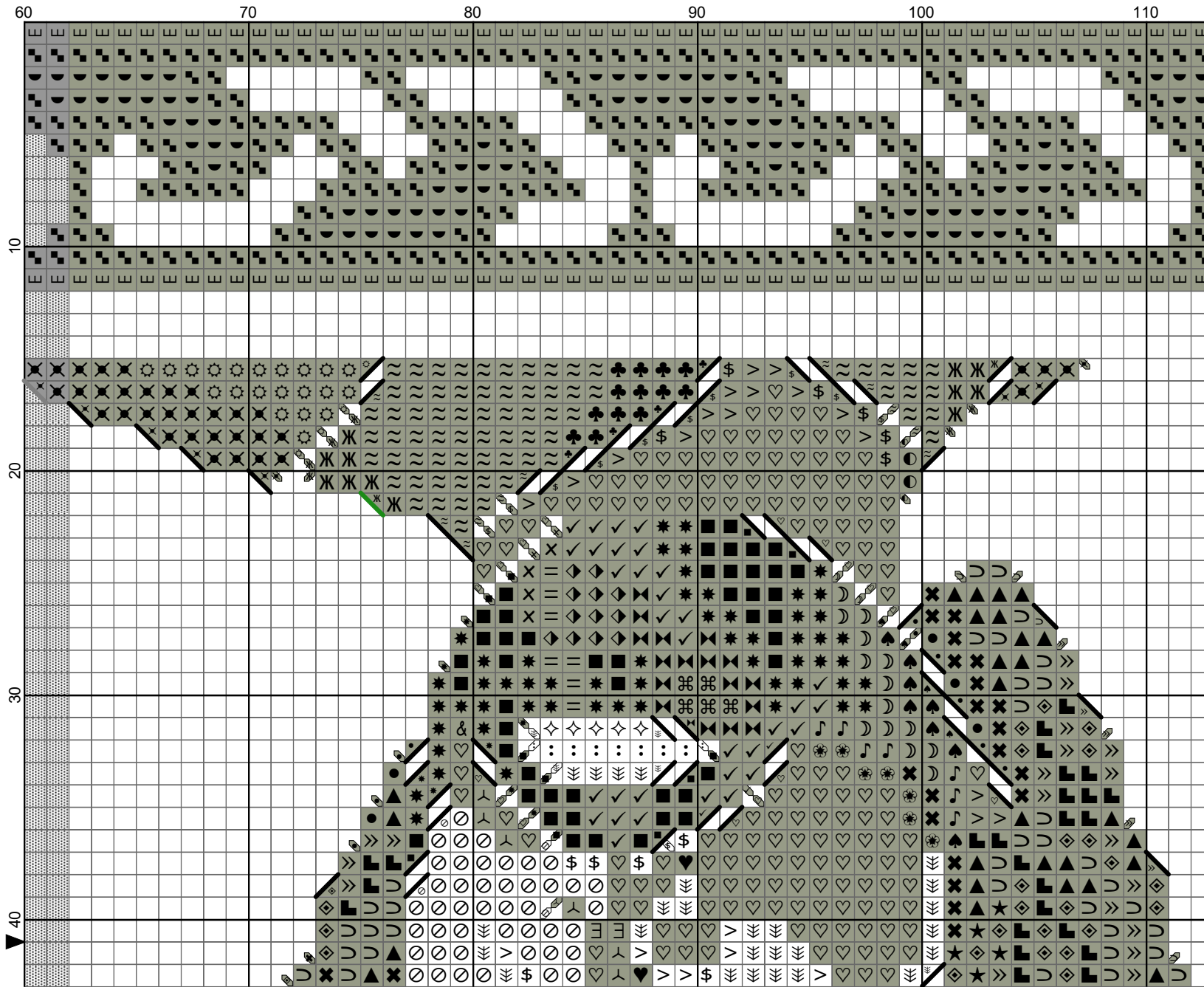
Stotchalong Four Pattern Eight by Emily & Matt Fitzpatrick



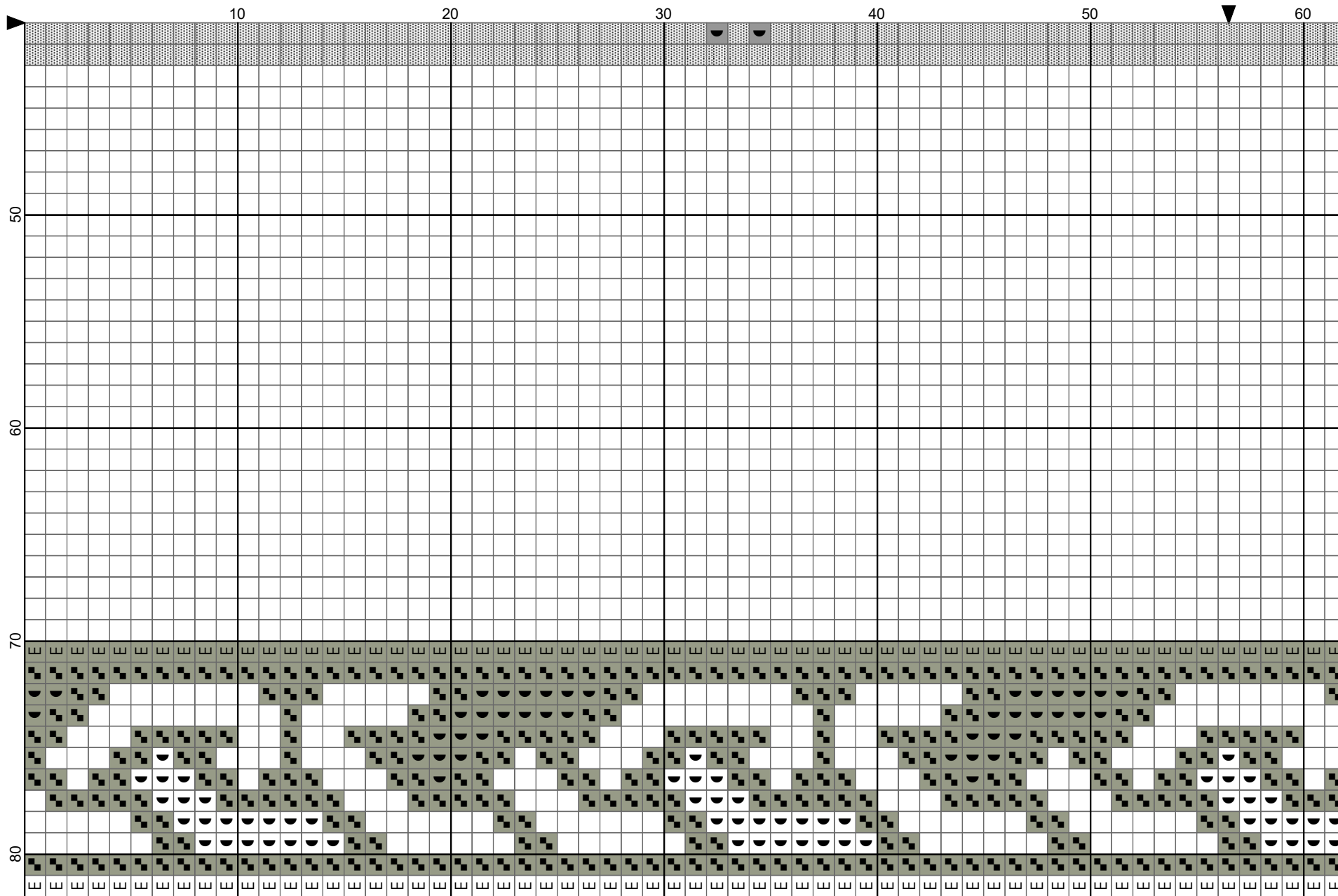
Steotchalong Four Pattern Eight by Emily & Matt Fitzpatrick



Stotchalong Four Pattern Eight by Emily & Matt Fitzpatrick



Steotchalong Four Pattern Eight by Emily & Matt Fitzpatrick



Steotchalong Four Pattern Eight by Emily & Matt Fitzpatrick

