

Steotchalong 2016 Pattern Five

Author: Emily & Matt Fitzpatrick
 Copyright: Steotch Fine Needleart
 Website: steotch.com
 Fabric: 16 ct aida
 Grid Size: 113W x 82H
 Design Area: 7.06" x 5.06" (113 x 81 stitches)



Legend:

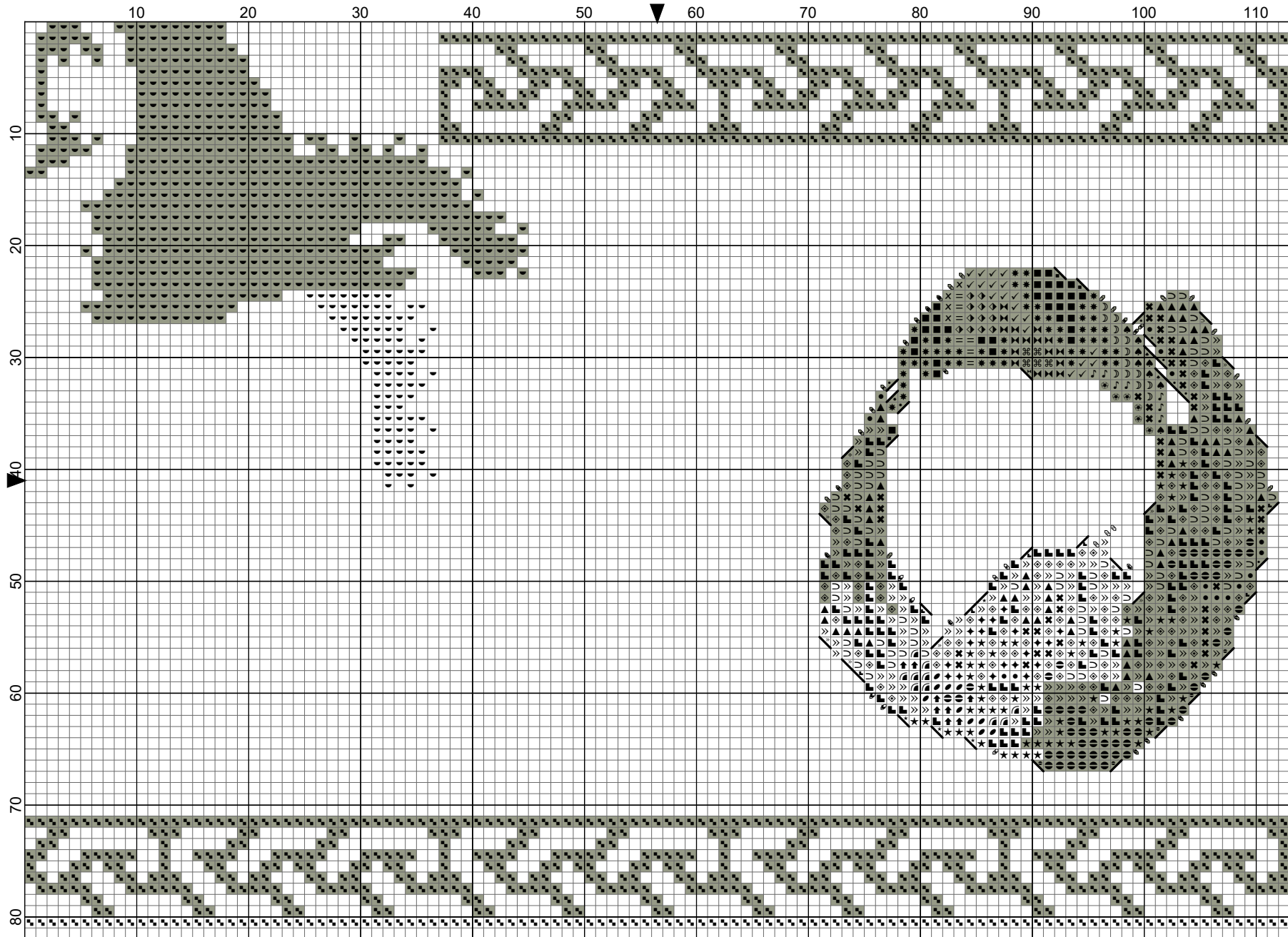
[2] DMC 420* hazel nut brown - dk	[2] DMC 422* hazel nut brown - lt	[2] DMC 839* beige brown - dk	[2] DMC 938* coffee brown - ul dk
[2] DMC 420* hazel nut brown - dk	[2] DMC 422* hazel nut brown - lt	[2] DMC 841* beige brown - lt	[2] DMC 938* coffee brown - ul dk
[2] DMC 420 hazel nut brown - dk	[2] DMC 434* brown - lt	[2] DMC 839* beige brown - dk	[2] DMC 3371 black brown
[2] DMC 420* hazel nut brown - dk	[2] DMC 677* old gold - vy lt	[2] DMC 898* coffee brown - vy dk	[2] DMC 3864* mocha beige - lt
[2] DMC 422* hazel nut brown - lt	[2] DMC 839* beige brown - dk	[2] DMC 898* coffee brown - vy dk	[2] DMC 3864* mocha beige - lt
[2] DMC 422* hazel nut brown - lt	[2] DMC 801* coffee brown - dk	[2] DMC 898* coffee brown - vy dk	[2] DLE E3821 Light Gold
[2] DMC 422* hazel nut brown - lt	[2] DMC 839* beige brown - dk	[2] DMC 938* coffee brown - ul dk	OR... DMC 3820 straw - dk

(*) Blended Entries:

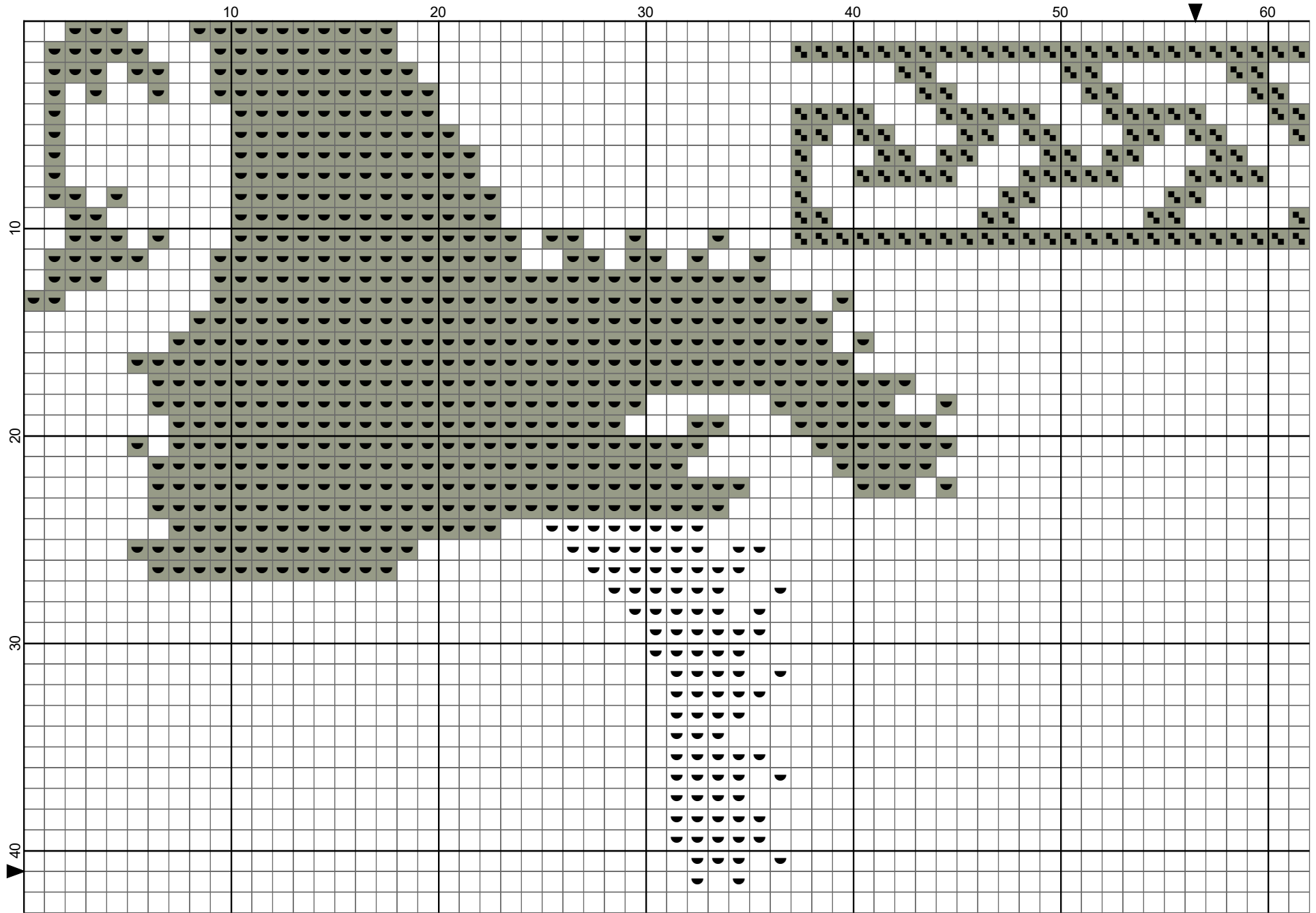
DMC-420 & DMC-167	(DMC Cotton-hazel nut brown - dk blended with DMC Cotton-yellow beige - vy dk)
DMC-420 & DMC-646	(DMC Cotton-hazel nut brown - dk blended with DMC Cotton-beaver gray - dk)
DMC-420 & DMC-434	(DMC Cotton-hazel nut brown - dk blended with DMC Cotton-brown - lt)
DMC-422 & DMC-646	(DMC Cotton-hazel nut brown - lt blended with DMC Cotton-beaver gray - dk)
DMC-422 & DMC-739	(DMC Cotton-hazel nut brown - lt blended with DMC Cotton-tan - ul vy lt)
DMC-422 & DMC-3023	(DMC Cotton-hazel nut brown - lt blended with DMC Cotton-brown gray - lt)
DMC-422 & DMC-167	(DMC Cotton-hazel nut brown - lt blended with DMC Cotton-yellow beige - vy dk)
DMC-422 & DMC-738	(DMC Cotton-hazel nut brown - lt blended with DMC Cotton-tan - vy lt)
DMC-434 & DMC-646	(DMC Cotton-brown - lt blended with DMC Cotton-beaver gray - dk)
DMC-677 & DMC-739	(DMC Cotton-old gold - vy lt blended with DMC Cotton-tan - ul vy lt)
DMC-839 & DMC-841	(DMC Cotton-beige brown - dk blended with DMC Cotton-beige brown - lt)
DMC-801 & DMC-433	(DMC Cotton-coffee brown - dk blended with DMC Cotton-brown - md)
DMC-839 & DMC-3021	(DMC Cotton-beige brown - dk blended with DMC Cotton-brown gray - vy dk)
DMC-839 & DMC-647	(DMC Cotton-beige brown - dk blended with DMC Cotton-beaver gray - md)
DMC-841 & DMC-938	(DMC Cotton-beige brown - lt blended with DMC Cotton-coffee brown - ul dk)
DMC-839 & DMC-645	(DMC Cotton-beige brown - dk blended with DMC Cotton-beaver gray - vy dk)
DMC-898 & DMC-3371	(DMC Cotton-coffee brown - vy dk blended with DMC Cotton-black brown)
DMC-898 & DMC-3021	(DMC Cotton-coffee brown - vy dk blended with DMC Cotton-brown gray - vy dk)
DMC-898 & DMC-3031	(DMC Cotton-coffee brown - vy dk blended with DMC Cotton-mocha brown - vy dk)
DMC-938 & DMC-3021	(DMC Cotton-coffee brown - ul dk blended with DMC Cotton-mocha brown - vy dk)
DMC-938 & DMC-647	(DMC Cotton-coffee brown - ul dk blended with DMC Cotton-beaver gray - md)
DMC-938 & DMC-645	(DMC Cotton-coffee brown - ul dk blended with DMC Cotton-beaver gray - vy dk)
DMC-3864 & DMC-898	(DMC Cotton-mocha beige - lt blended with DMC Cotton-coffee brown - vy dk)
DMC-3864 & DMC-3790	(DMC Cotton-mocha beige - lt blended with DMC Cotton-beige gray - ul dk)

**YOU CAN PLAY
 WITH YOUR
 NEW APP
 WHEN YOU
 FINISH YOUR
 STITCHING.**

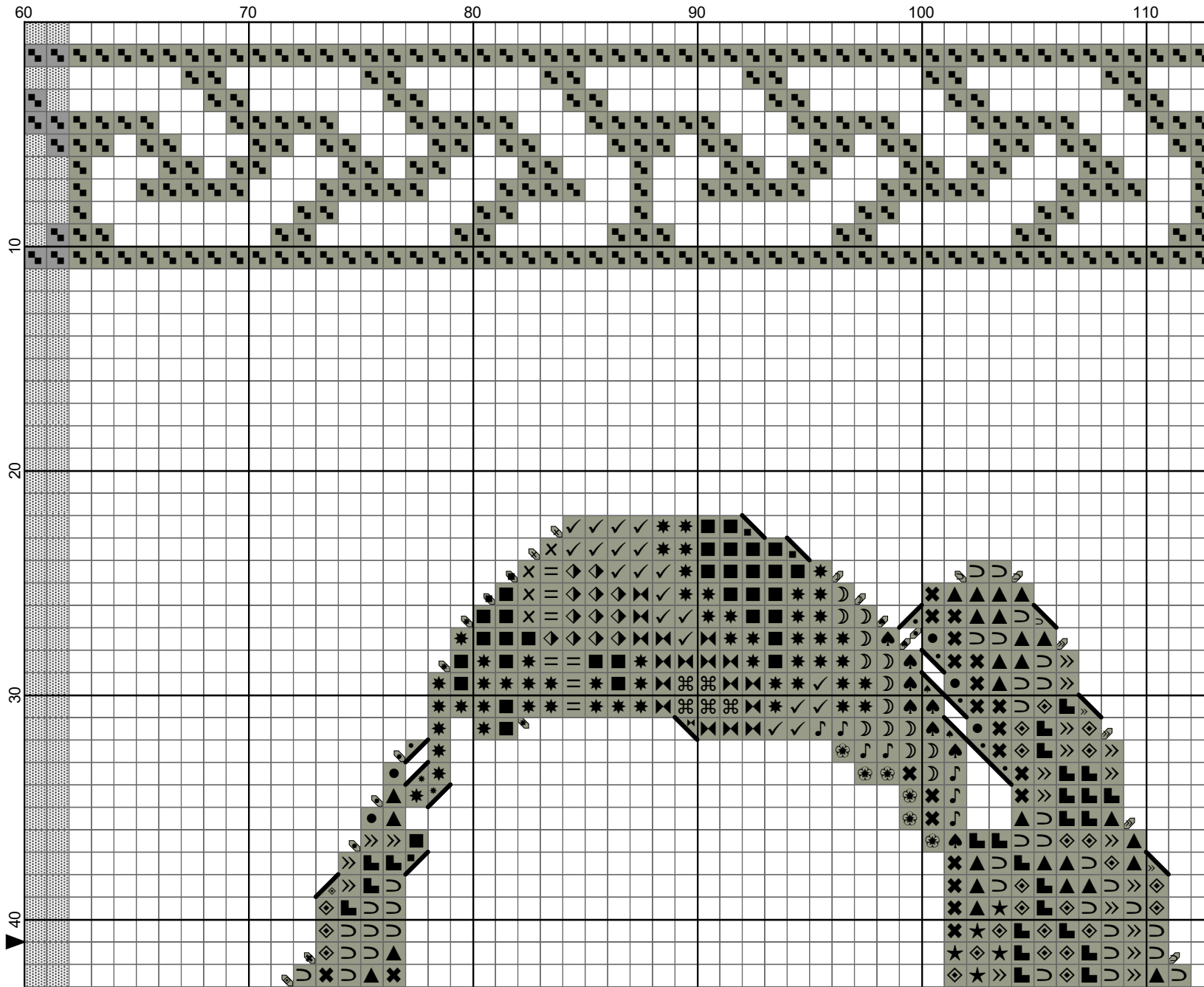
Steotchalong 2016 Pattern V



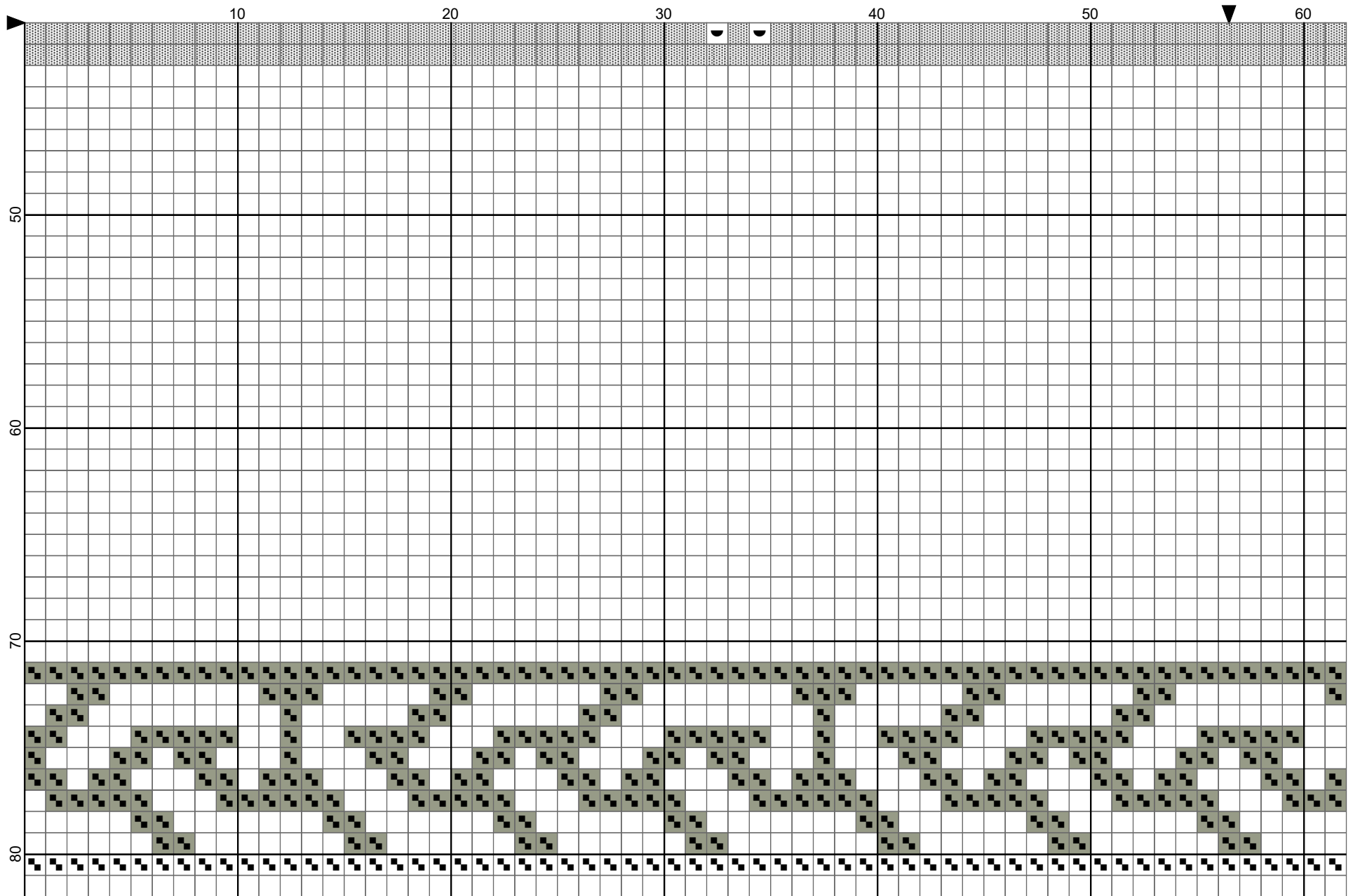
Steotchalong 2016 Pattern V



Steotchalong 2016 Pattern V



Steotchalong 2016 Pattern V



Steotchalong 2016 Pattern V

