

Steotchalong Four: Pattern 7

Author: Emily & Matt Fitzpatrick
 Copyright: Steotch Fine Needleart, LLC
 Website: steotch.com
 Grid Size: 113W x 82H
 Design Area: 7.06" x 5.06" (113 x 81 stitches)



Legend:

	[2] DMC 420* hazel nut brown - dk		[2] DMC 677* old gold - vy lt		[2] DMC 898* coffee brown - vy dk		[2] DMC 3782 mocha brown - lt
	[2] DMC 420* hazel nut brown - dk		[2] DMC 712 cream		[2] DMC 898* coffee brown - vy dk		[2] DMC 3790 beige gray - ul dk
	[2] DMC 420* hazel nut brown - dk		[2] DMC 801* coffee brown - dk		[2] DMC 938* coffee brown - ul dk		[2] DMC 3863* mocha beige - md
	[2] DMC 420 hazel nut brown - dk		[2] DMC 839* beige brown - dk		[2] DMC 938* coffee brown - ul dk		[2] DMC 3863* mocha beige - md
	[2] DMC 422* hazel nut brown - lt		[2] DMC 839* beige brown - dk		[2] DMC 938* coffee brown - ul dk		[2] DMC 3864* mocha beige - lt
	[2] DMC 422* hazel nut brown - lt		[2] DMC 839* beige brown - dk		[2] DMC 945* tawny - md		[2] DMC 3864* mocha beige - lt
	[2] DMC 422* hazel nut brown - lt		[2] DMC 839* beige brown - dk		[2] DMC 945* tawny - md		[2] DMC 3864* mocha beige - lt
	[2] DMC 422* hazel nut brown - lt		[2] DMC 842* beige brown - vy lt		[2] DMC 3371 black brown		[2] DMC 3864* mocha beige - lt
	[2] DMC 422* hazel nut brown - lt		[2] DMC 841* beige brown - lt		[2] DMC 3770* tawny - vy lt		[2] DMC 3864* mocha beige - lt
	[2] DMC 434* brown - lt		[2] DMC 842 beige brown - vy lt		[2] DMC 3774* desert sand - vy lt		[2] DLE E3821 Light Gold
	[2] DMC 645 beaver gray - vy dk		[2] DMC 898* coffee brown - vy dk		[2] DMC 3777 terra cotta - vy dk		[2] OR... DMC 3820 straw - dk

(*) Blended Entries:

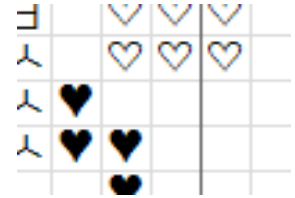
	DMC-420 & DMC-167	(DMC Cotton-hazel nut brown - dk blended with DMC Cotton-yellow beige - vy dk)
	DMC-420 & DMC-434	(DMC Cotton-hazel nut brown - dk blended with DMC Cotton-brown - lt)
	DMC-420 & DMC-646	(DMC Cotton-hazel nut brown - dk blended with DMC Cotton-beaver gray - dk)
	DMC-422 & DMC-646	(DMC Cotton-hazel nut brown - lt blended with DMC Cotton-beaver gray - dk)
	DMC-422 & DMC-3023	(DMC Cotton-hazel nut brown - lt blended with DMC Cotton-brown gray - lt)
	DMC-422 & DMC-739	(DMC Cotton-hazel nut brown - lt blended with DMC Cotton-tan - ul vy lt)
	DMC-422 & DMC-738	(DMC Cotton-hazel nut brown - lt blended with DMC Cotton-tan - vy lt)
	DMC-422 & DMC-167	(DMC Cotton-hazel nut brown - lt blended with DMC Cotton-yellow beige - vy dk)
	DMC-434 & DMC-646	(DMC Cotton-brown - lt blended with DMC Cotton-beaver gray - dk)
	DMC-677 & DMC-739	(DMC Cotton-old gold - vy lt blended with DMC Cotton-tan - ul vy lt)
	DMC-801 & DMC-433	(DMC Cotton-coffee brown - dk blended with DMC Cotton-brown - md)
	DMC-839 & DMC-3021	(DMC Cotton-beige brown - dk blended with DMC Cotton-brown gray - vy dk)
	DMC-839 & DMC-841	(DMC Cotton-beige brown - dk blended with DMC Cotton-beige brown - lt)
	DMC-839 & DMC-645	(DMC Cotton-beige brown - dk blended with DMC Cotton-beaver gray - vy dk)
	DMC-839 & DMC-647	(DMC Cotton-beige brown - dk blended with DMC Cotton-beaver gray - md)
	DMC-842 & DMC-712	(DMC Cotton-beige brown - vy lt blended with DMC Cotton-cream)
	DMC-841 & DMC-938	(DMC Cotton-beige brown - lt blended with DMC Cotton-coffee brown - ul dk)
	DMC-898 & DMC-3031	(DMC Cotton-coffee brown - vy dk blended with DMC Cotton-mocha brown - vy dk)
	DMC-898 & DMC-3371	(DMC Cotton-coffee brown - vy dk blended with DMC Cotton-black brown)
	DMC-898 & DMC-3021	(DMC Cotton-coffee brown - vy dk blended with DMC Cotton-brown gray - vy dk)
	DMC-938 & DMC-645	(DMC Cotton-coffee brown - ul dk blended with DMC Cotton-beaver gray - vy dk)
	DMC-938 & DMC-647	(DMC Cotton-coffee brown - ul dk blended with DMC Cotton-beaver gray - md)
	DMC-938 & DMC-3021	(DMC Cotton-coffee brown - ul dk blended with DMC Cotton-brown gray - vy dk)
	DMC-945 & DMC-839	(DMC Cotton-tawny - md blended with DMC Cotton-beige brown - dk)
	DMC-945 & DMC-3864	(DMC Cotton-tawny - md blended with DMC Cotton-mocha beige - lt)
	DMC-3770 & DMC-543	(DMC Cotton-tawny - vy lt blended with DMC Cotton-beige brown - ul vy lt)
	DMC-3774 & DMC-543	(DMC Cotton-desert sand - vy lt blended with DMC Cotton-beige brown - ul vy lt)
	DMC-3863 & DMC-840	(DMC Cotton-mocha beige - md blended with DMC Cotton-beige brown - md)
	DMC-3863 & DMC-841	(DMC Cotton-mocha beige - md blended with DMC Cotton-beige brown - lt)
	DMC-3864 & DMC-3790	(DMC Cotton-mocha beige - lt blended with DMC Cotton-beige gray - ul dk)
	DMC-3864 & DMC-898	(DMC Cotton-mocha beige - lt blended with DMC Cotton-coffee brown - vy dk)
	DMC-3864 & DMC-841	(DMC Cotton-mocha beige - lt blended with DMC Cotton-beige brown - lt)

Special Notes for 2016 Steotchalong Pattern 7

Woo-hoo! Week 7!!! Only one more week of this stuff before things get... detailed!

Here are a few notes you'll want to be aware of this week--

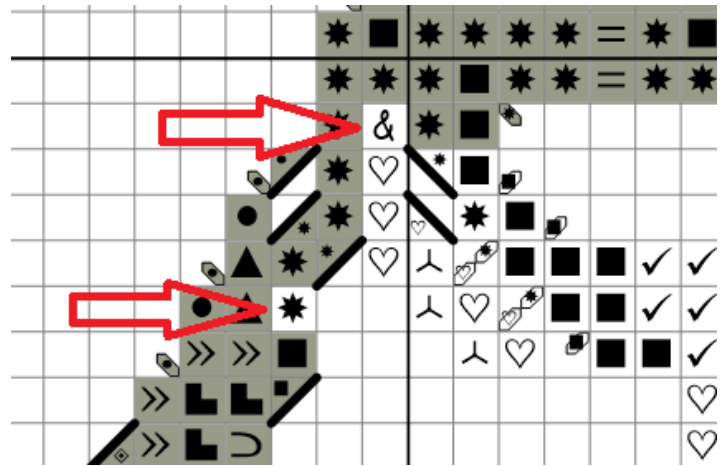
Be on the lookout for two heart symbols this week. You'll want to be sure you don't confuse them. Yes, we could have substituted a different symbol for the shaded heart, but frankly, we've used all the good ones already.



There are two squares of particular note on this week's pattern.

First, don't miss the single "&" square. It's a special stitch that really ties the sampler together.

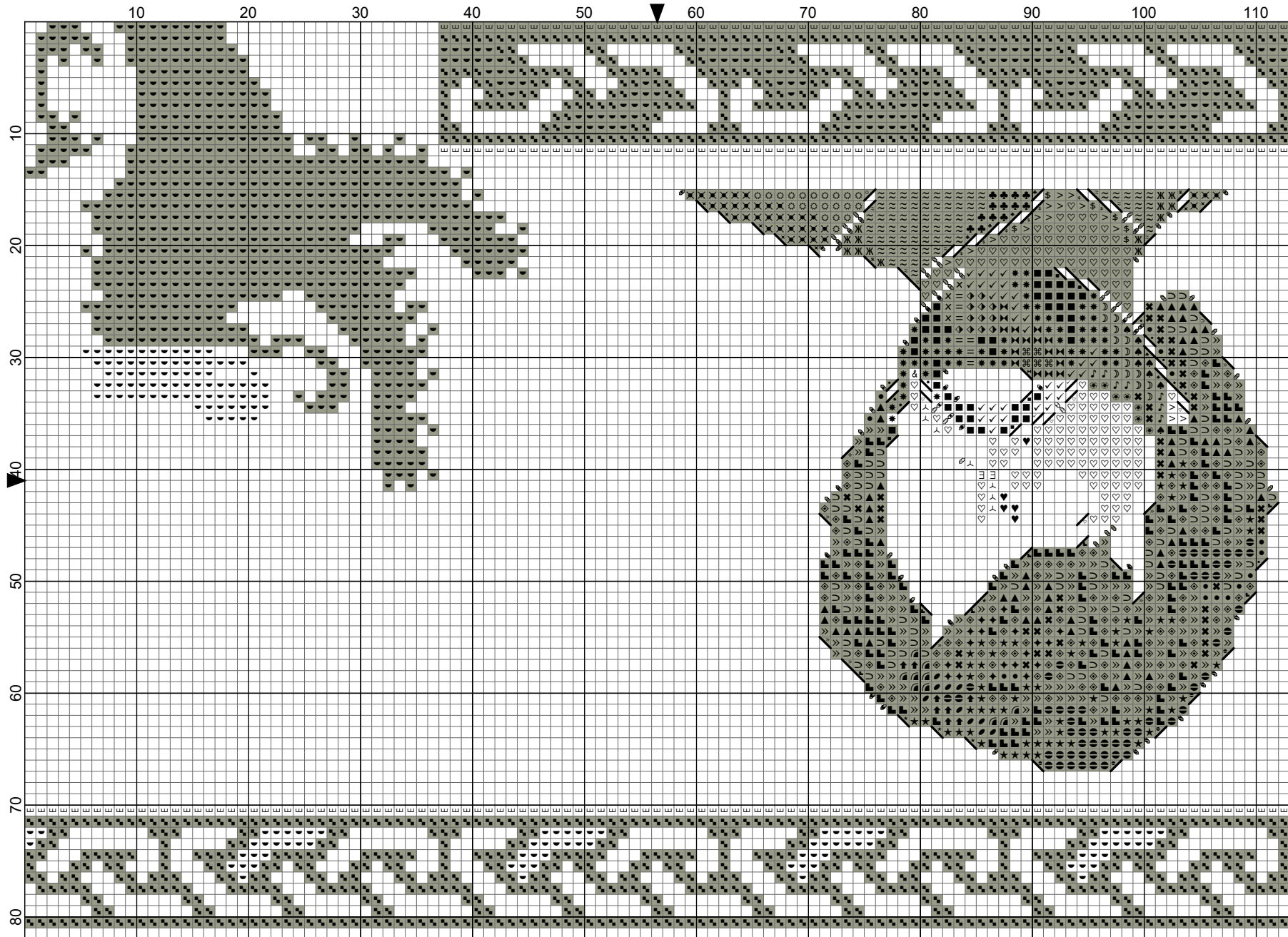
Second, there is a starburst that was an error of omission way back at the beginning of our journey. We saved it for this week when you would see the symbol's return.



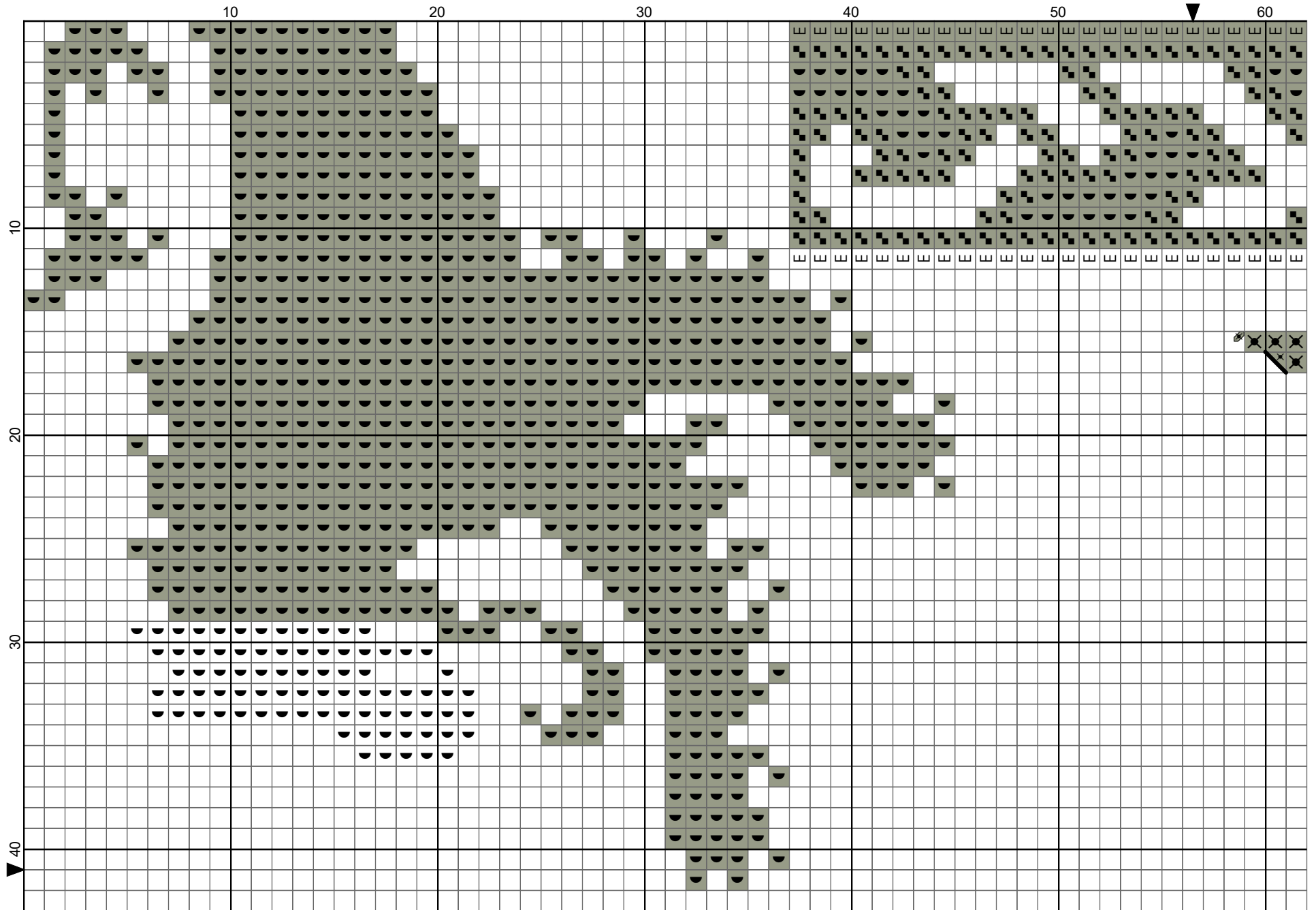
That's it for Special Notes. Have a great week!



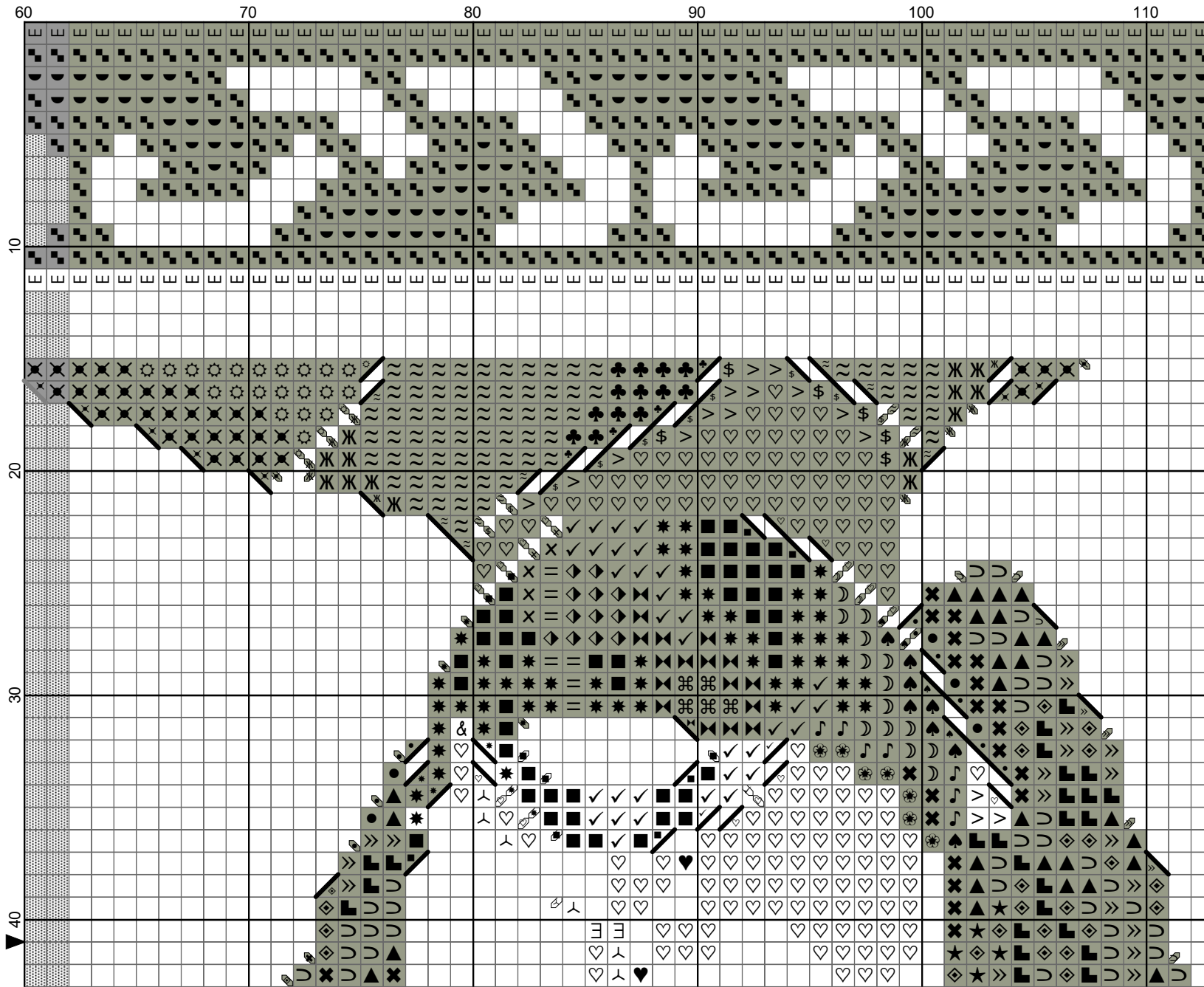
Stotchalong 4: Pattern 7 by Emily & Matt Fitzpatrick



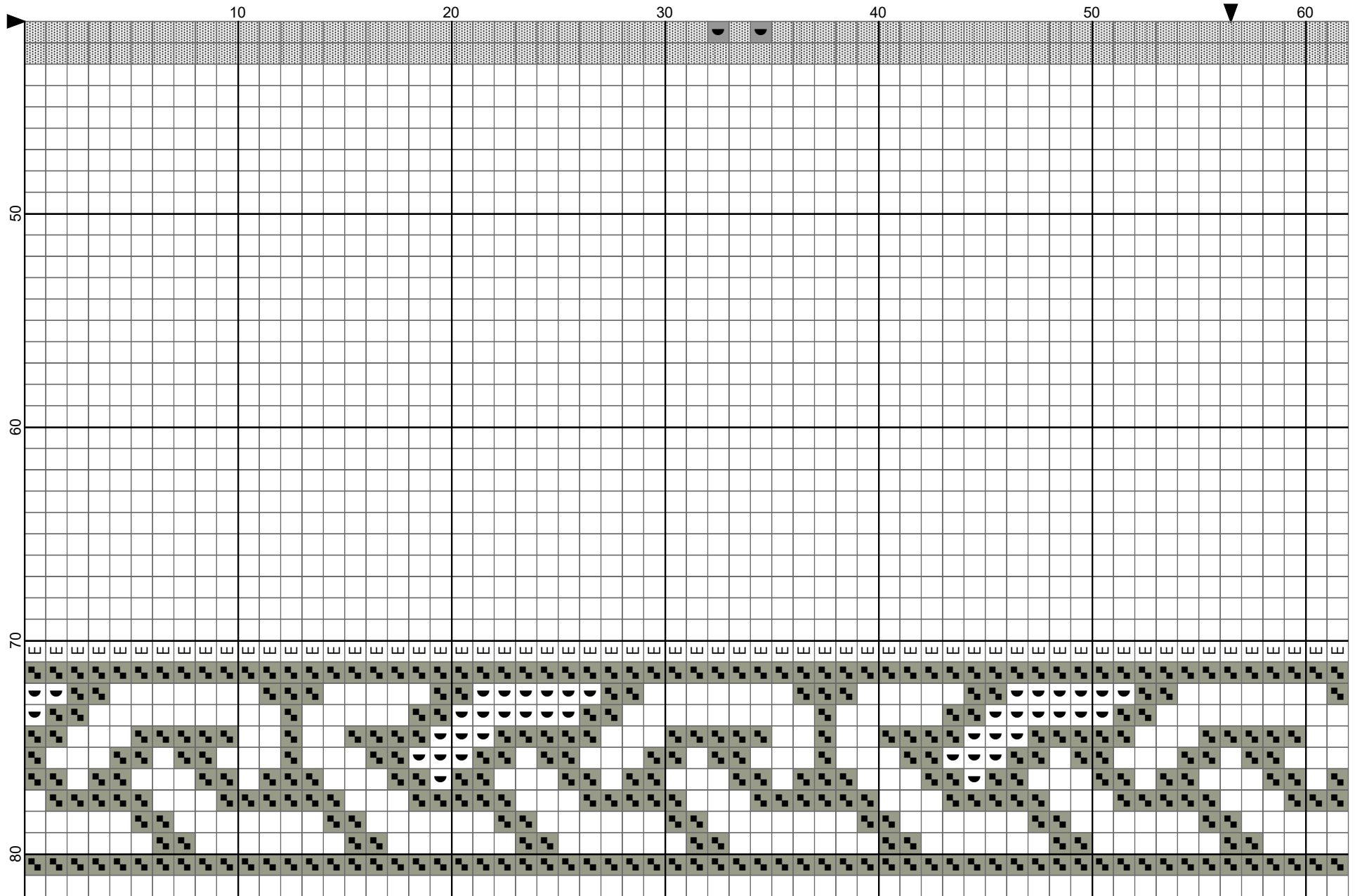
Steotchalong 4: Pattern 7 by Emily & Matt Fitzpatrick



Steotchalong 4: Pattern 7 by Emily & Matt Fitzpatrick



Steotchalong 4: Pattern 7 by Emily & Matt Fitzpatrick



Stotchalong 4: Pattern 7 by Emily & Matt Fitzpatrick

