

# Steotchalong 2016 - Week Two

**Author:** Emily & Matt Fitzpatrick  
**Copyright:** Steotch Fine Needleart, LLC  
**Website:** steotch.com  
**Grid Size:** 113W x 82H  
**Design Area:** 7.06" x 5.00" (113 x 80 stitches)



## Legend:

[2] DMC 420* hazel nut brown - dk	[2] DMC 801* coffee brown - dk	[2] DMC 839* beige brown - dk	[2] DMC 938* coffee brown - ul dk
[2] DMC 420* hazel nut brown - dk	[2] DMC 422* hazel nut brown - lt	[2] DMC 898* coffee brown - vy dk	[2] DMC 938* coffee brown - ul dk
[2] DMC 420* hazel nut brown - dk	[2] DMC 839* beige brown - dk	[2] DMC 898* coffee brown - vy dk	[2] DMC 3371 black brown
[2] DMC 422* hazel nut brown - lt	[2] DMC 839* beige brown - dk	[2] DMC 898* coffee brown - vy dk	[2] DMC 3864* mocha beige - lt
[2] DMC 422* hazel nut brown - lt	[2] DMC 839* beige brown - dk	[2] DMC 938* coffee brown - ul dk	[2] DLE E3821 Light Gold

OR... DMC 3820 straw - dk

## (\*) Blended Entries:

DMC-420 & DMC-167	(DMC Cotton-hazel nut brown - dk blended with DMC Cotton-yellow beige - vy dk)
DMC-420 & DMC-434	(DMC Cotton-hazel nut brown - dk blended with DMC Cotton-brown - lt)
DMC-422 & DMC-738	(DMC Cotton-hazel nut brown - lt blended with DMC Cotton-tan - vy lt)
DMC-422 & DMC-739	(DMC Cotton-hazel nut brown - lt blended with DMC Cotton-tan - ul vy lt)
DMC-801 & DMC-433	(DMC Cotton-coffee brown - dk blended with DMC Cotton-brown - md)
DMC-422 & DMC-167	(DMC Cotton-hazel nut brown - lt blended with DMC Cotton-yellow beige - vy dk)
DMC-839 & DMC-645	(DMC Cotton-beige brown - dk blended with DMC Cotton-beaver gray - vy dk)
DMC-839 & DMC-3021	(DMC Cotton-beige brown - dk blended with DMC Cotton-brown gray - vy dk)
DMC-839 & DMC-841	(DMC Cotton-beige brown - dk blended with DMC Cotton-beige brown - lt)
DMC-839 & DMC-647	(DMC Cotton-beige brown - dk blended with DMC Cotton-beaver gray - md)
DMC-898 & DMC-3371	(DMC Cotton-coffee brown - vy dk blended with DMC Cotton-black brown)
DMC-898 & DMC-3031	(DMC Cotton-coffee brown - vy dk blended with DMC Cotton-mocha brown - vy dk)
DMC-898 & DMC-3021	(DMC Cotton-coffee brown - vy dk blended with DMC Cotton-brown gray - vy dk)
DMC-938 & DMC-647	(DMC Cotton-coffee brown - ul dk blended with DMC Cotton-beaver gray - md)
DMC-938 & DMC-645	(DMC Cotton-coffee brown - ul dk blended with DMC Cotton-beaver gray - vy dk)
DMC-938 & DMC-3021	(DMC Cotton-coffee brown - ul dk blended with DMC Cotton-brown gray - vy dk)
DMC-3864 & DMC-3790	(DMC Cotton-mocha beige - lt blended with DMC Cotton-beige gray - ul dk)



## Special Notes for 2016 Steotchalong Pattern 2

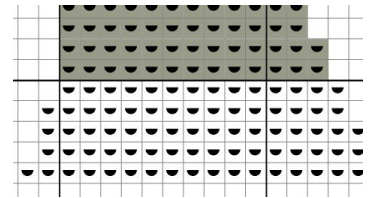
Hey, you're back! Welcome to Week 2. Now you'll start to see the pattern building on what you've already stitched. Whatever could it be?

All cross stitches are made with two threads, except for the metallic floss (E3821), which uses only one thread (use two strands if you are stitching with the alternate 3820).

We have included two copies of the pattern, one copy of the whole chart on one page, and a second copy spread across multiple pages to make it easier to see the smaller symbols. *The stitching across the bottom is starting to fill in, so don't miss that on the last pages.* Note that on the multiple page pattern, the gray columns indicate where the two pages overlap.

### Grayed Out

This week, new stitches to complete will be in white; Stitches you've already completed will be shaded in gray, or "grey," for our British friends. It should be easy to follow along.

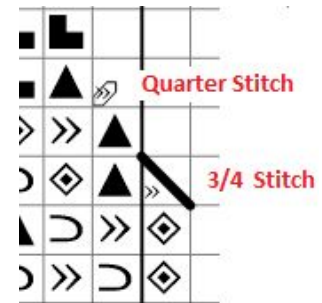


### Blended Entries

Yep, more of them. You know what to do!

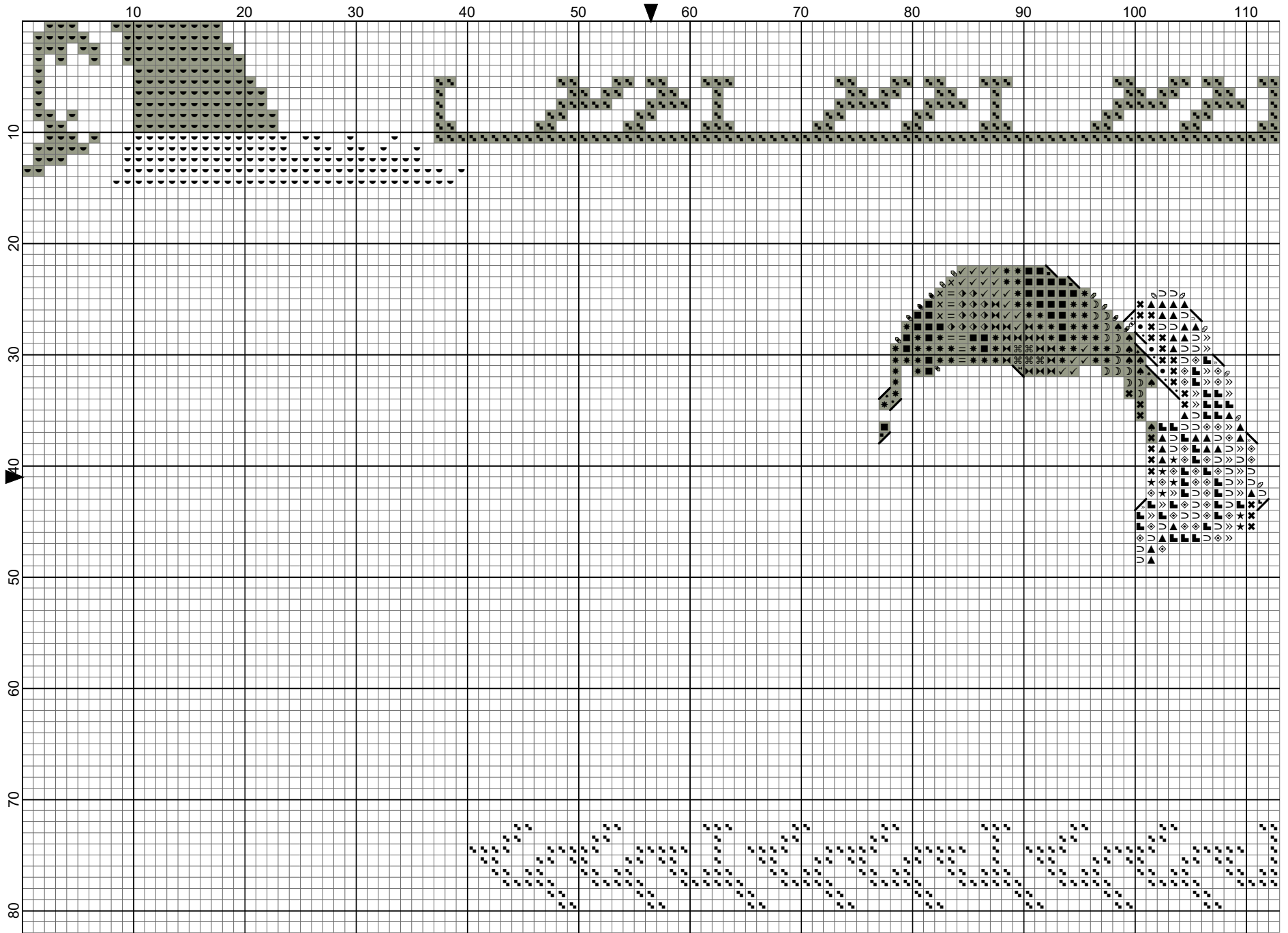
### Quarter Stitches and 3/4 Stitches

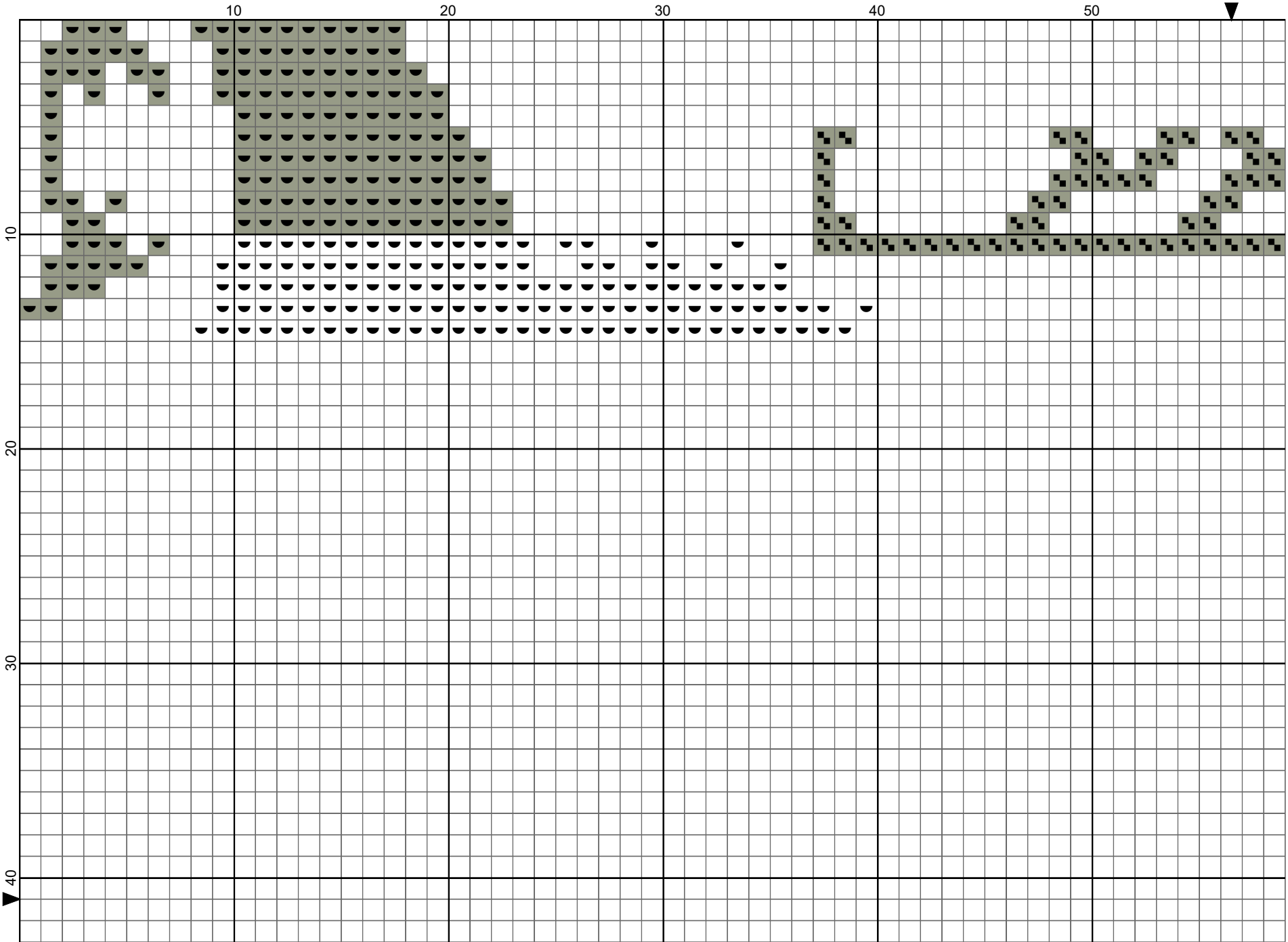
These will play out just like last time, but the quarter stitches look slightly different this week- now they are little bars with symbols in the corners of the square. The 3/4 Stitches look the same with the lines across the diagonal.

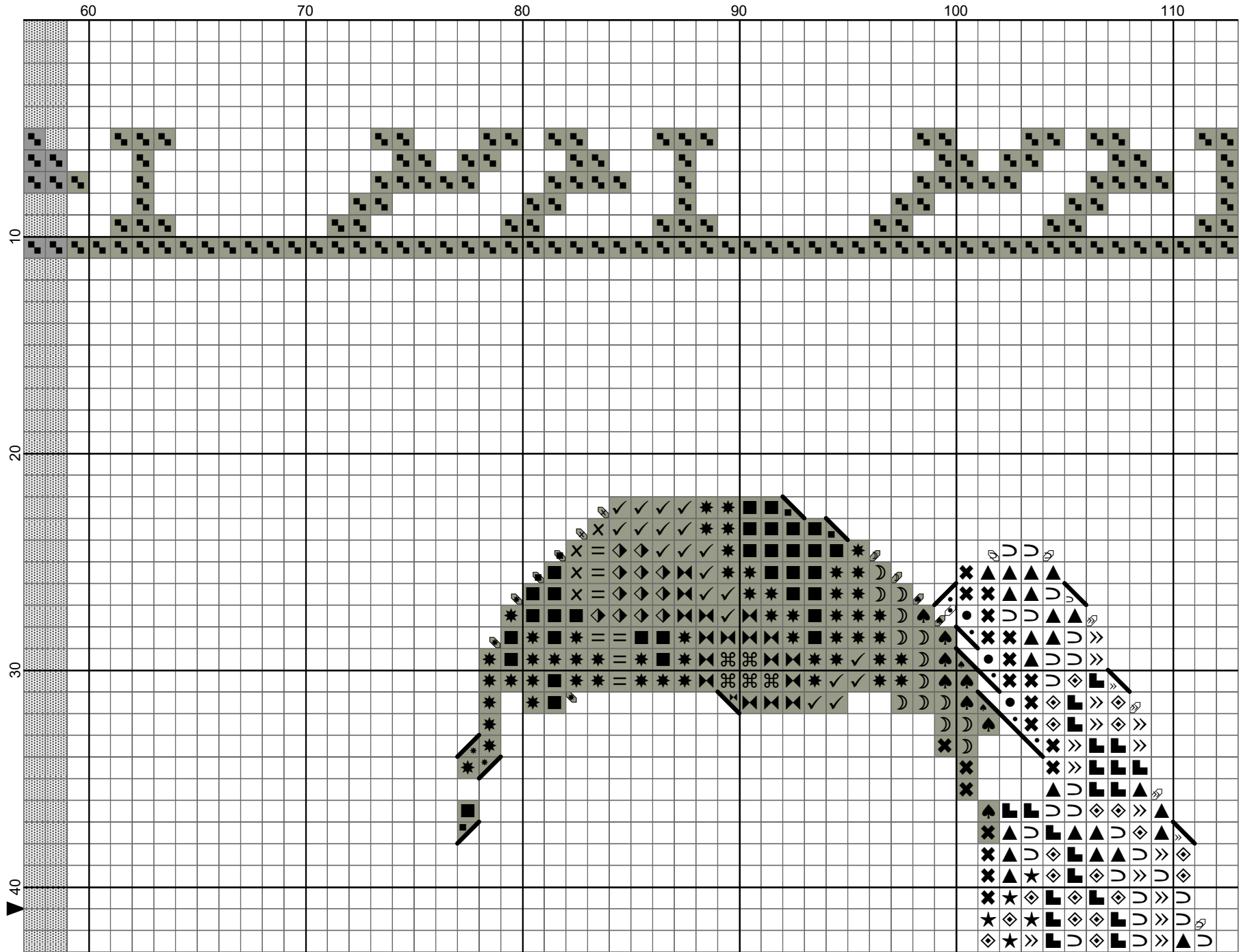


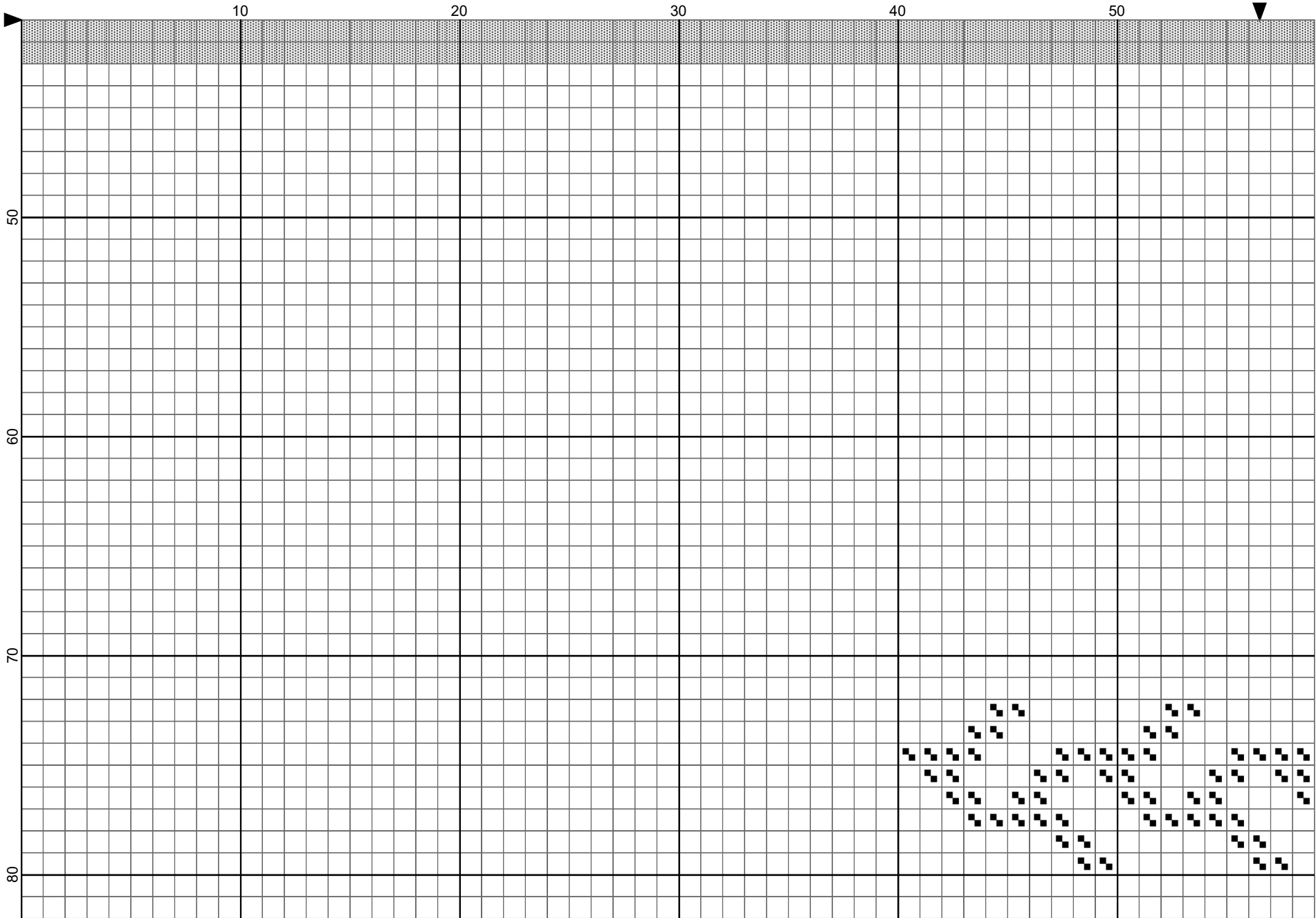
Remember, if you have any more questions, don't hesitate to ask!

Drop us an e-mail at [steotch@gmail.com](mailto:steotch@gmail.com), tweet at us (@steotch) or post it in the forums.

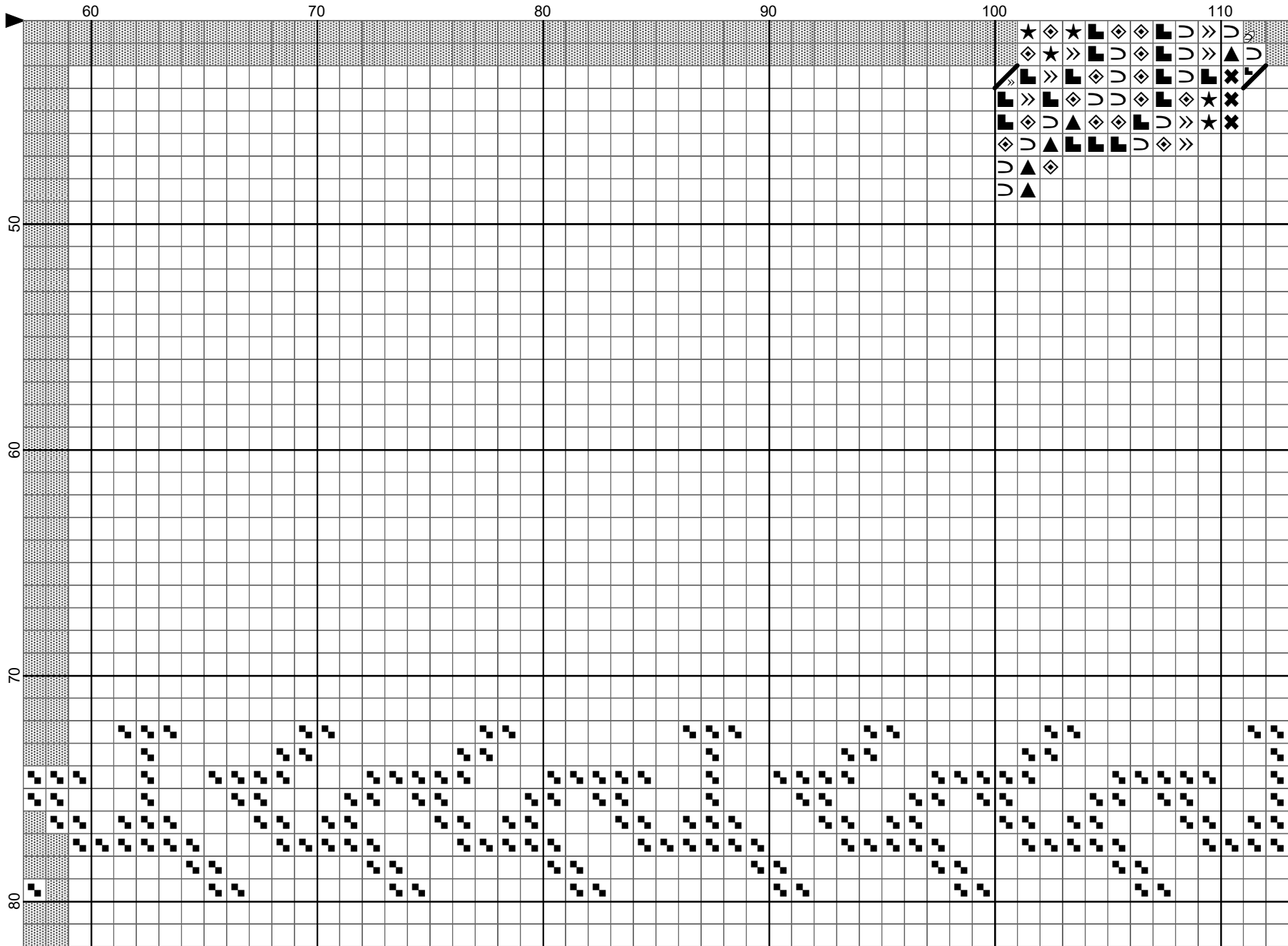








Steotch Fine Needleart, LLC



Steotch Fine Needleart, LLC