

# Steotchalong 4: Pattern Three

Author: Emily & Matt Fitzpatrick  
 Copyright: Steoch Fine Needleart, LLC  
 Website: steotch.com  
 Grid Size: 113W x 82H  
 Design Area: 7.06" x 5.00" (113 x 80 stitches)



**Legend:**

[2] DMC 420* hazel nut brown - dk	[2] DMC 422* hazel nut brown - lt	[2] DMC 420* hazel nut brown - dk	[2] DMC 801* coffee brown - dk	[2] DMC 839* beige brown - dk	[2] DMC 898* coffee brown - vy dk	[2] DMC 938* coffee brown - ul dk
[2] DMC 420* hazel nut brown - dk	[2] DMC 839* beige brown - dk	[2] DMC 898* coffee brown - vy dk	[2] DMC 938* coffee brown - ul dk	[2] DMC 3371 black brown	[2] DMC 3864* mocha beige - lt	[2] DLE E3821 Light Gold
[2] DMC 422* hazel nut brown - lt	[2] DMC 839* beige brown - dk	[2] DMC 898* coffee brown - vy dk	[2] DMC 938* coffee brown - ul dk	[2] DMC 3864* mocha beige - lt	[2] DLE E3821 Light Gold	
[2] DMC 422* hazel nut brown - lt	[2] DMC 839* beige brown - dk	[2] DMC 938* coffee brown - ul dk				

OR... DMC 3820 straw - dk

**(\*) Blended Entries:**

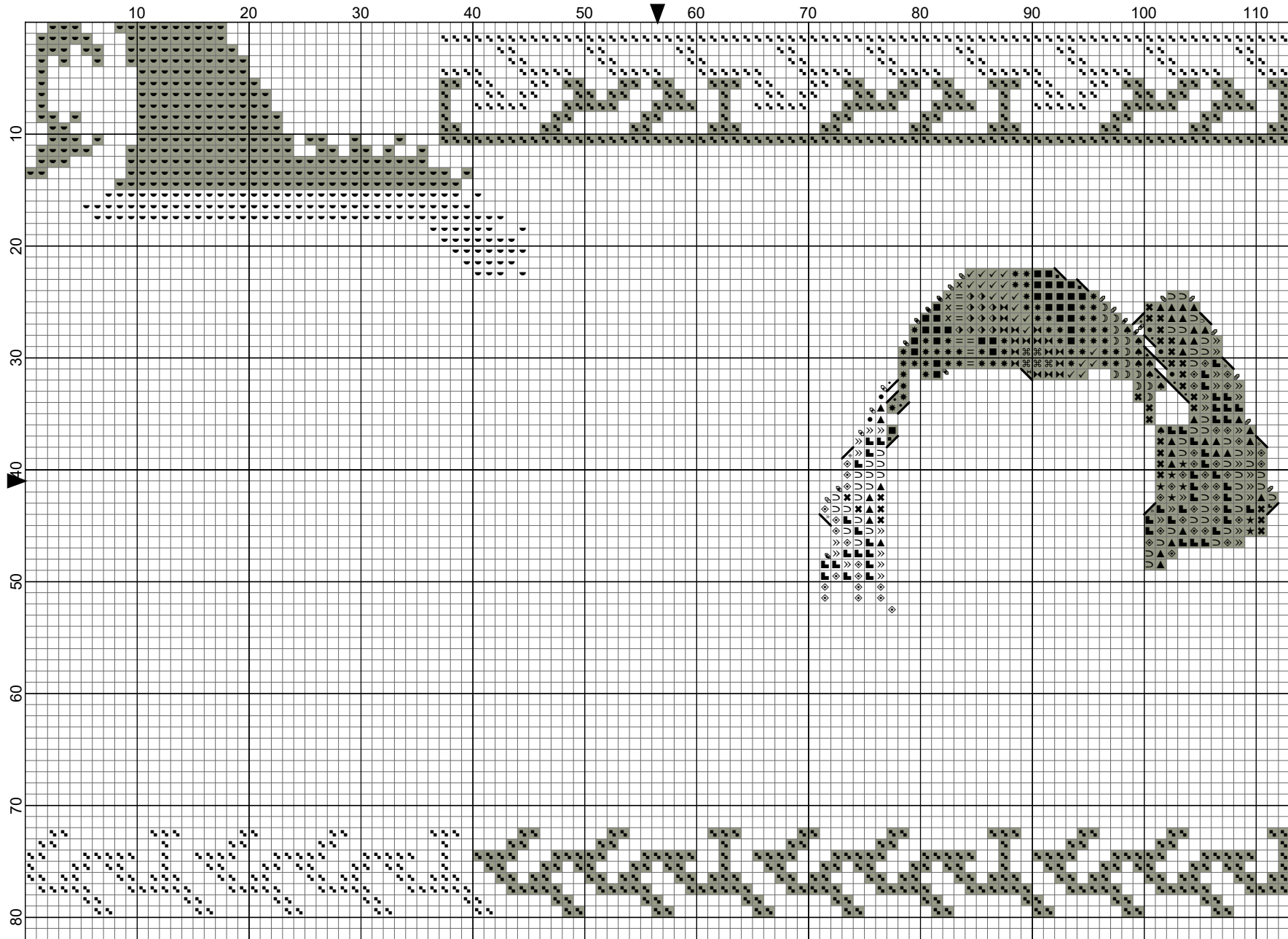
DMC-420 & DMC-167	(DMC Cotton-hazel nut brown - dk blended with DMC Cotton-yellow beige - vy dk)
DMC-420 & DMC-434	(DMC Cotton-hazel nut brown - dk blended with DMC Cotton-brown - lt)
DMC-422 & DMC-739	(DMC Cotton-hazel nut brown - lt blended with DMC Cotton-tan - ul vy lt)
DMC-422 & DMC-738	(DMC Cotton-hazel nut brown - lt blended with DMC Cotton-tan - vy lt)
DMC-422 & DMC-167	(DMC Cotton-hazel nut brown - lt blended with DMC Cotton-yellow beige - vy dk)
DMC-801 & DMC-433	(DMC Cotton-coffee brown - dk blended with DMC Cotton-brown - md)
DMC-839 & DMC-841	(DMC Cotton-beige brown - dk blended with DMC Cotton-beige brown - lt)
DMC-839 & DMC-647	(DMC Cotton-beige brown - dk blended with DMC Cotton-beaver gray - md)
DMC-839 & DMC-645	(DMC Cotton-beige brown - dk blended with DMC Cotton-beaver gray - vy dk)
DMC-839 & DMC-3021	(DMC Cotton-beige brown - dk blended with DMC Cotton-brown gray - vy dk)
DMC-898 & DMC-3021	(DMC Cotton-coffee brown - vy dk blended with DMC Cotton-brown gray - vy dk)
DMC-898 & DMC-3031	(DMC Cotton-coffee brown - vy dk blended with DMC Cotton-mocha brown - vy dk)
DMC-898 & DMC-3371	(DMC Cotton-coffee brown - vy dk blended with DMC Cotton-black brown)
DMC-938 & DMC-647	(DMC Cotton-coffee brown - ul dk blended with DMC Cotton-beaver gray - md)
DMC-938 & DMC-645	(DMC Cotton-coffee brown - ul dk blended with DMC Cotton-beaver gray - vy dk)
DMC-938 & DMC-3021	(DMC Cotton-coffee brown - ul dk blended with DMC Cotton-brown gray - vy dk)
DMC-3864 & DMC-3790	(DMC Cotton-mocha beige - lt blended with DMC Cotton-beige gray - ul dk)

**WEEK THREE!**

There are no new special notes for this pattern.

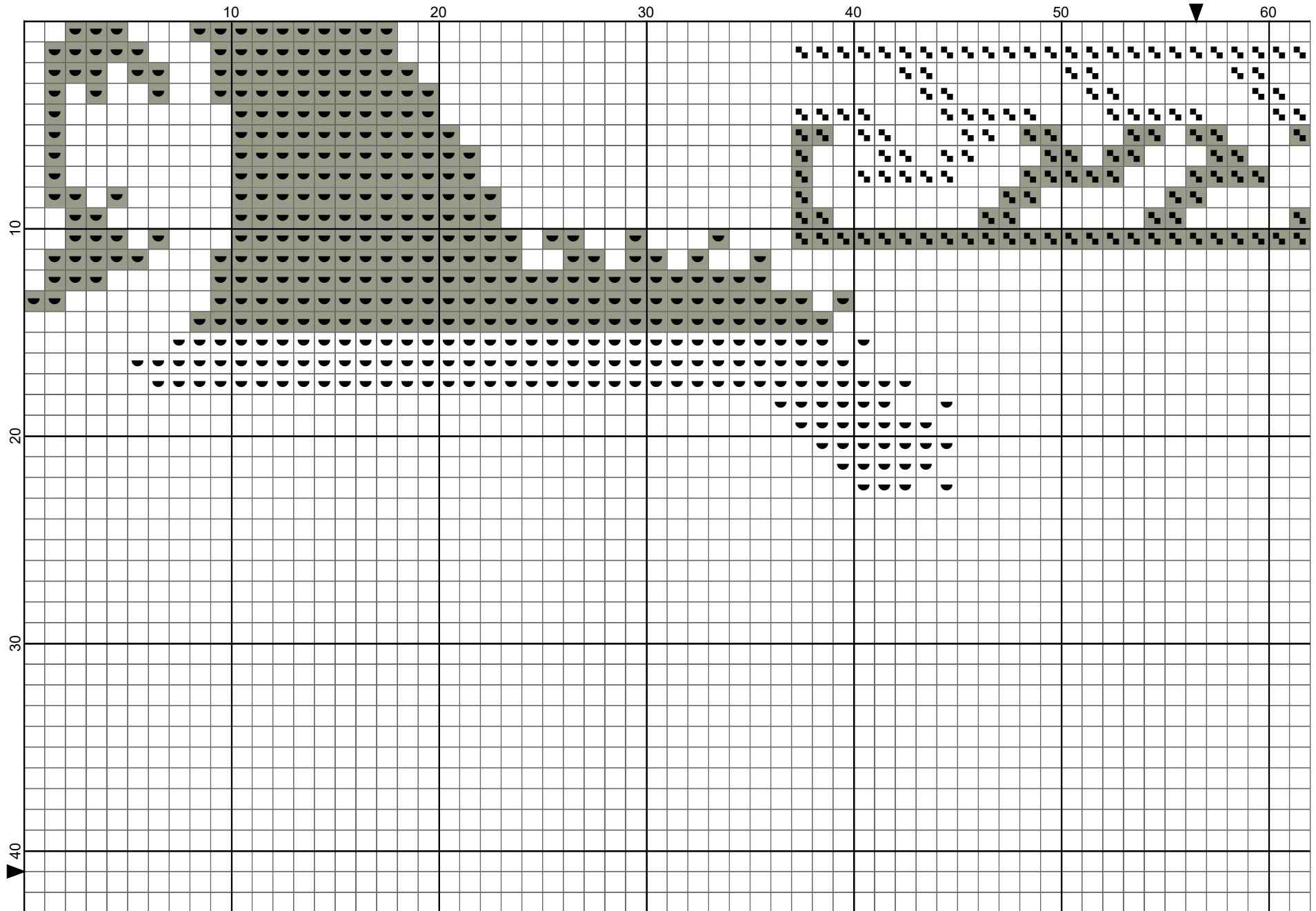


Steotchalong 4: Pattern Three by Emily & Matt Fitzpatrick

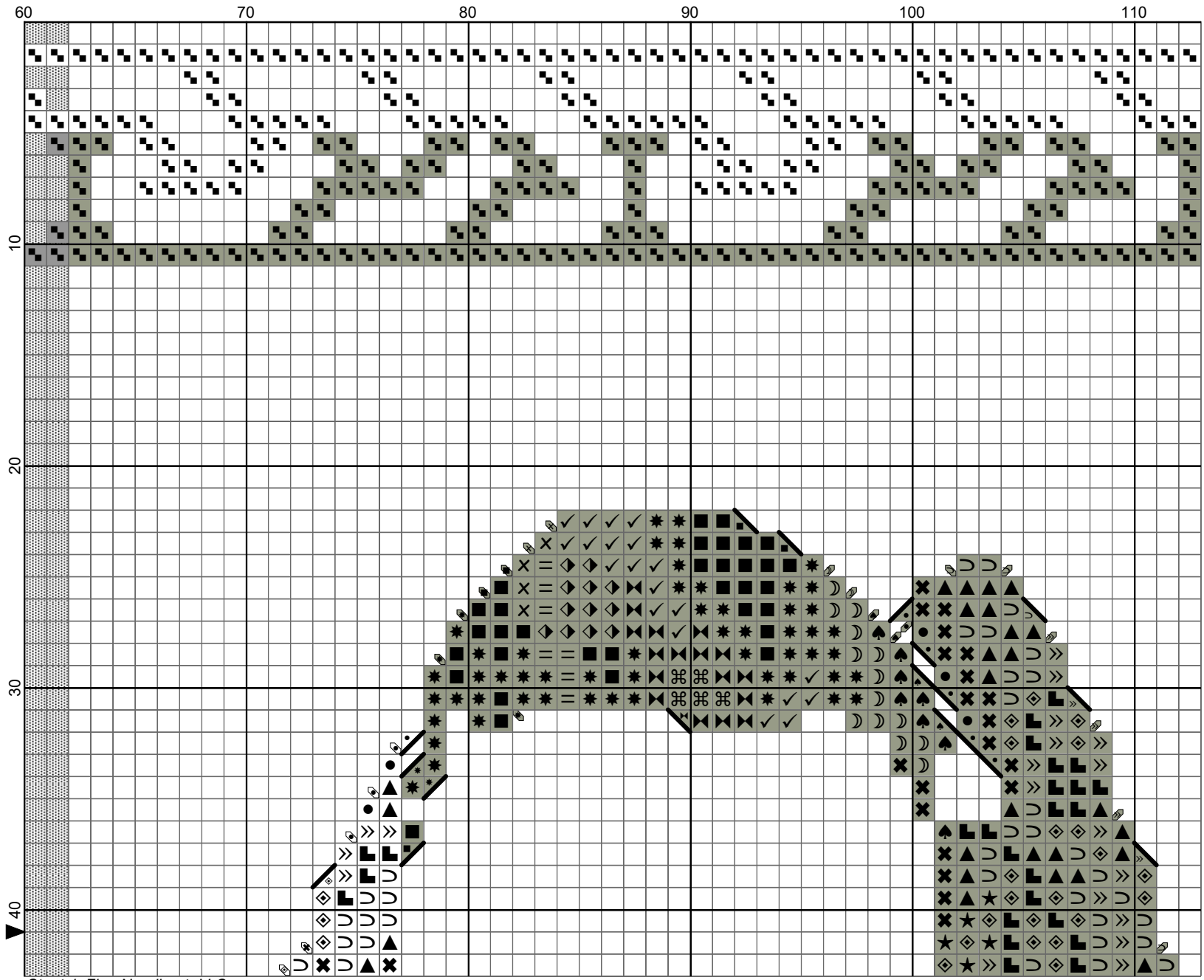


Steotch Fine Needleart, LLC

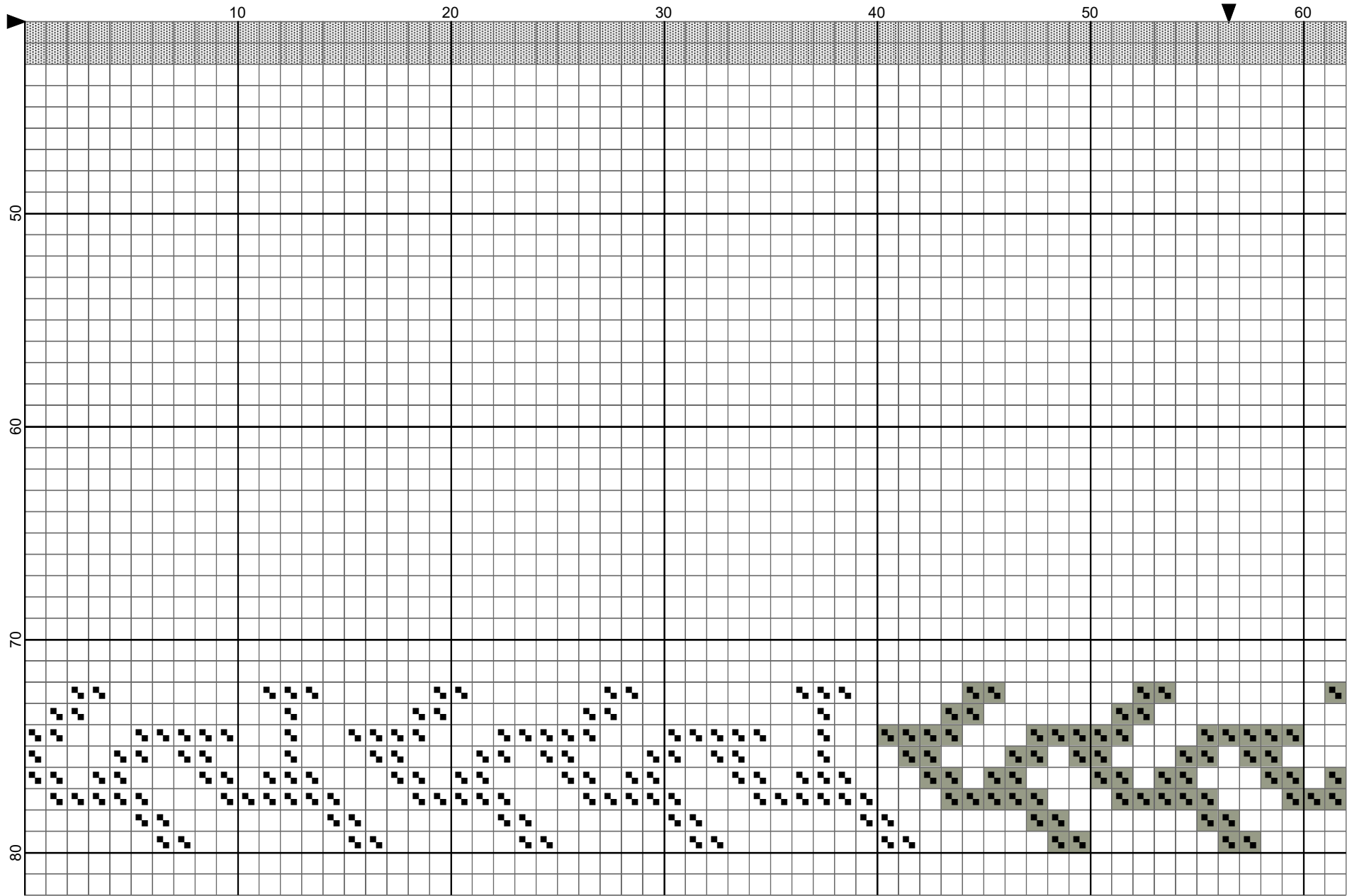
Steotchalong 4: Pattern Three by Emily & Matt Fitzpatrick



Steotchalong 4: Pattern Three by Emily & Matt Fitzpatrick

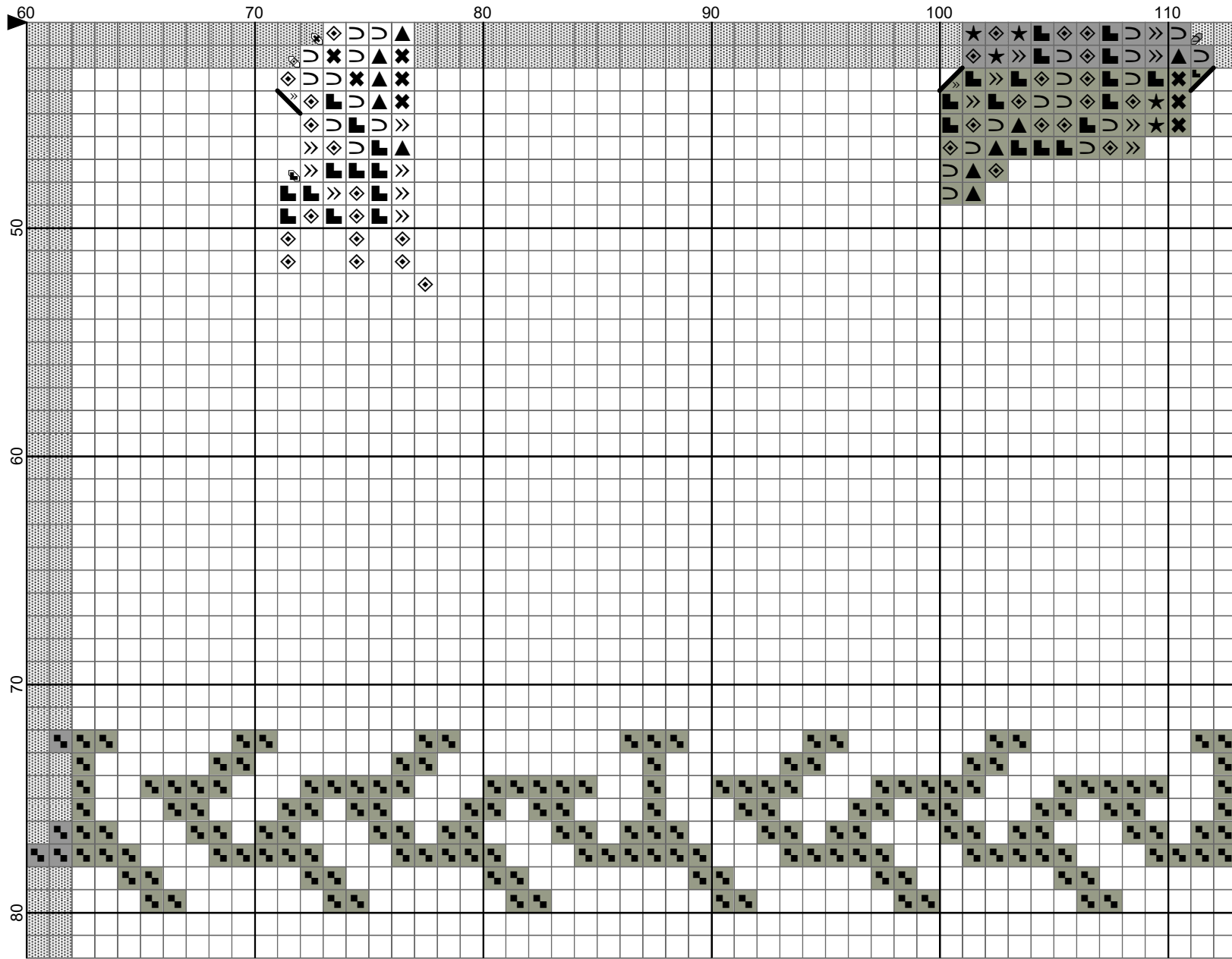


Steotchalong 4: Pattern Three by Emily & Matt Fitzpatrick



Steotch Fine Needleart, LLC

Steotchalong 4: Pattern Three by Emily & Matt Fitzpatrick



Steotch Fine Needleart, LLC