

Steotchalong 2015 - Pattern 5 of 8

Author: Emily & Matt Fitzpatrick
Copyright: Steotch Fine Needleart
Website: steotch.com
Fabric: 16 ct aida
Grid Size: 97W x 67H
Design Area: 6.06" x 3.56" (97 x 57 stitches)



Legend:

	[2] DMC 310 black		[2] DMC 645* beaver gray - vy dk		[2] DMC 844* beaver gray - ul dk
	[2] DMC 312 navy blue - lt		[2] DMC 726 topaz -lt		[2] DMC 844* beaver gray - ul dk
	[2] DMC 317 pewter gray		[2] DMC 727 topaz - vy lt		[2] DMC 3064 desert sand
	[2] DMC 318 steel gray - lt		[2] DMC 754 peach - lt		[2] DMC 948 peach - vy lt
	[2] DMC 415* pearl gray		[2] DMC 754* peach - lt		[2] DMC 3346 hunter green
	[2] DMC 415* pearl gray		[2] DMC 754* peach - lt		[2] DMC 3771* terra cotta - ul vy lt
	[2] DMC 415 pearl gray		[2] DMC 754* peach - lt		[2] DMC 3733 dusty rose
	[2] DMC 415* pearl gray		[2] DMC 754* peach - lt		[2] DMC 3771* terra cotta - ul vy lt
	[2] DMC 433 brown - md		[2] DMC 754* peach - lt		[2] DMC 3771 terra cotta - ul vy lt
	[2] DMC 435* brown - vy lt		[2] DMC 762 pearl gray - vy lt		[2] DMC 3799 pewter gray - vy dk
	[2] DMC 436* tan		[2] DMC 794 cornflower blue - lt		[2] DMC White white
	[2] DMC 437 tan - lt		[2] DMC 840 beige brown - md		
	[2] DMC 645 beaver gray - vy dk		[2] DMC 844 beaver gray - ul dk		

(*) Blended Entries:

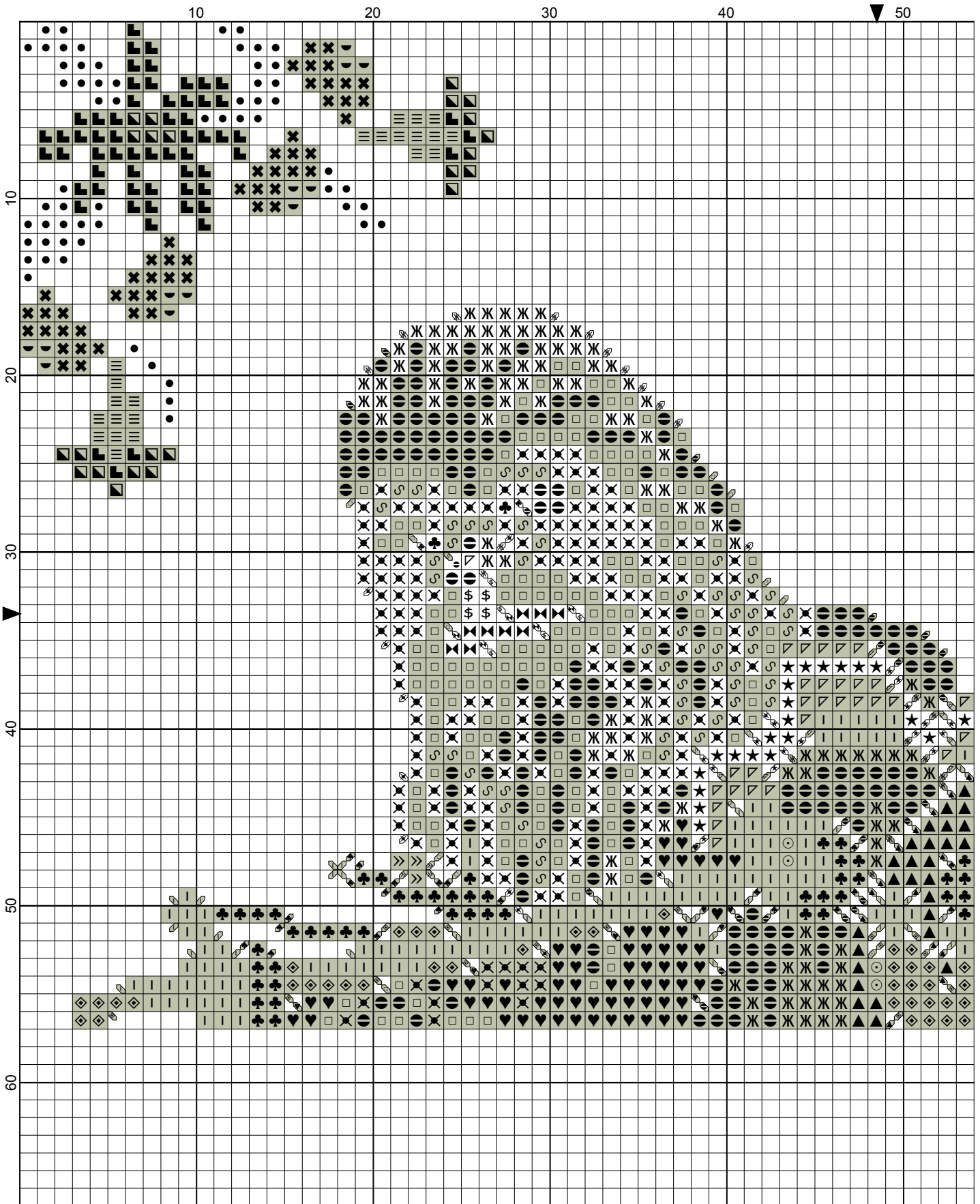
	DMC-415 & DMC-762	(DMC Cotton-pearl gray blended with DMC Cotton-pearl gray - vy lt)
	DMC-415 & DMC-317	(DMC Cotton-pearl gray blended with DMC Cotton-pewter gray)
	DMC-415 & DMC-318	(DMC Cotton-pearl gray blended with DMC Cotton-steel gray - lt)
	DMC-435 & DMC-840	(DMC Cotton-brown - vy lt blended with DMC Cotton-beige brown - md)
	DMC-436 & DMC-435	(DMC Cotton-tan blended with DMC Cotton-brown - vy lt)
	DMC-645 & DMC-840	(DMC Cotton-beaver gray - vy dk blended with DMC Cotton-beige brown - md)
	DMC-754 & DMC-840	(DMC Cotton-peach - lt blended with DMC Cotton-beige brown - md)
	DMC-754 & DMC-3064	(DMC Cotton-peach - lt blended with DMC Cotton-desert sand)
	DMC-754 & DMC-762	(DMC Cotton-peach - lt blended with DMC Cotton-pearl gray - vy lt)
	DMC-754 & DMC-948	(DMC Cotton-peach - lt blended with DMC Cotton-peach - vy lt)
	DMC-754 & DMC-415	(DMC Cotton-peach - lt blended with DMC Cotton-pearl gray)
	DMC-844 & DMC-310	(DMC Cotton-beaver gray - ul dk blended with DMC Cotton-black)
	DMC-844 & DMC-839	(DMC Cotton-beaver gray - ul dk blended with DMC Cotton-beige brown - dk)
	DMC-3771 & DMC-840	(DMC Cotton-terra cotta - ul vy lt blended with DMC Cotton-beige brown - md)
	DMC-3771 & DMC-3778	(DMC Cotton-terra cotta - ul vy lt blended with DMC Cotton-terra cotta - lt)

Special Notes for Pattern 5:

All cross stitches are made with two threads. Blended Entries use one of each of the threads listed on the chart. The squares you have previously stitched are indicated in gray on this pattern.

See the last page for additional notes.





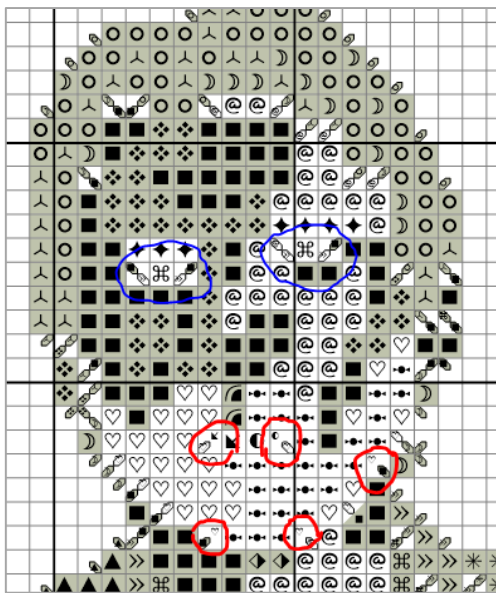
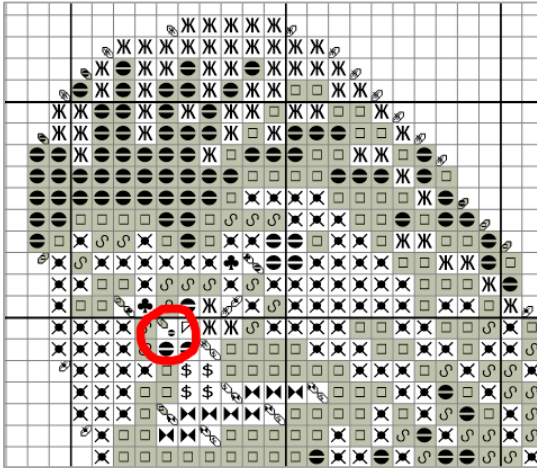


Stotch Fine Needleart

ADDITIONAL NOTES FOR PATTERN 5

3/4 Stitches this week-- there are a few. Here's where you'll find them!

The character on the left has one 3/4 Stitch on his nose. It is DMC 645+840 (the hamburgerish shape), and it shares a square with a quarter stitch of DMC 437, which you stitched last week.



The character on the right has a few more 3/4 Stitches. There are two 3/4 Stitches at the edges of the lips (one with DMC 3771 and the other with DMC 3771+3778), and three 3/4 Stitches along the jawline (DMC 754+762). Also be certain that you don't miss the quarter stitches in White for the corners of his eyes.

Finally, you may have noticed a rogue quarter stitch on Pattern 4 that was not there on the previous patterns, but was shaded in gray to suggest you had already stitched it. That quarter stitch was an error and the pattern has been corrected. We will be filling that square with a complete cross stitch this week; If you happened to stitch it last week and cannot remove the stitch, simply stitch over it- it shouldn't be a problem. We apologize for the error; the responsible parties have been sacked.

