

# Steotchalong 2015 - Pattern 2 of 8



**Author:** Emily & Matt Fitzpatrick  
**Copyright:** Steotch Fine Needleart  
**Website:** steotch.com  
**Fabric:** 16 ct aida  
**Grid Size:** 97W x 67H  
**Design Area:** 6.06" x 3.50" (97 x 56 stitches)

## Legend:

<table border="0"> <tr><td>▲</td><td>[2]</td><td>DMC</td><td>310</td><td>black</td></tr> <tr><td>▼</td><td>[2]</td><td>DMC</td><td>312</td><td>navy blue - lt</td></tr> <tr><td>■</td><td>[2]</td><td>DMC</td><td>435*</td><td>brown - vy lt</td></tr> <tr><td>■</td><td>[2]</td><td>DMC</td><td>436*</td><td>tan</td></tr> <tr><td>■</td><td>[2]</td><td>DMC</td><td>645*</td><td>beaver gray - vy dk</td></tr> </table>	▲	[2]	DMC	310	black	▼	[2]	DMC	312	navy blue - lt	■	[2]	DMC	435*	brown - vy lt	■	[2]	DMC	436*	tan	■	[2]	DMC	645*	beaver gray - vy dk	<table border="0"> <tr><td>▲</td><td>[2]</td><td>DMC</td><td>645</td><td>beaver gray - vy dk</td></tr> <tr><td>■</td><td>[2]</td><td>DMC</td><td>726</td><td>topaz -lt</td></tr> <tr><td>■</td><td>[2]</td><td>DMC</td><td>727</td><td>topaz - vy lt</td></tr> <tr><td>■</td><td>[2]</td><td>DMC</td><td>794</td><td>cornflower blue - lt</td></tr> <tr><td>■</td><td>[2]</td><td>DMC</td><td>844</td><td>beaver gray - ul dk</td></tr> </table>	▲	[2]	DMC	645	beaver gray - vy dk	■	[2]	DMC	726	topaz -lt	■	[2]	DMC	727	topaz - vy lt	■	[2]	DMC	794	cornflower blue - lt	■	[2]	DMC	844	beaver gray - ul dk	<table border="0"> <tr><td>■</td><td>[2]</td><td>DMC</td><td>844*</td><td>beaver gray - ul dk</td></tr> <tr><td>■</td><td>[2]</td><td>DMC</td><td>844*</td><td>beaver gray - ul dk</td></tr> <tr><td>■</td><td>[2]</td><td>DMC</td><td>3733</td><td>dusty rose</td></tr> </table>	■	[2]	DMC	844*	beaver gray - ul dk	■	[2]	DMC	844*	beaver gray - ul dk	■	[2]	DMC	3733	dusty rose
▲	[2]	DMC	310	black																																																															
▼	[2]	DMC	312	navy blue - lt																																																															
■	[2]	DMC	435*	brown - vy lt																																																															
■	[2]	DMC	436*	tan																																																															
■	[2]	DMC	645*	beaver gray - vy dk																																																															
▲	[2]	DMC	645	beaver gray - vy dk																																																															
■	[2]	DMC	726	topaz -lt																																																															
■	[2]	DMC	727	topaz - vy lt																																																															
■	[2]	DMC	794	cornflower blue - lt																																																															
■	[2]	DMC	844	beaver gray - ul dk																																																															
■	[2]	DMC	844*	beaver gray - ul dk																																																															
■	[2]	DMC	844*	beaver gray - ul dk																																																															
■	[2]	DMC	3733	dusty rose																																																															

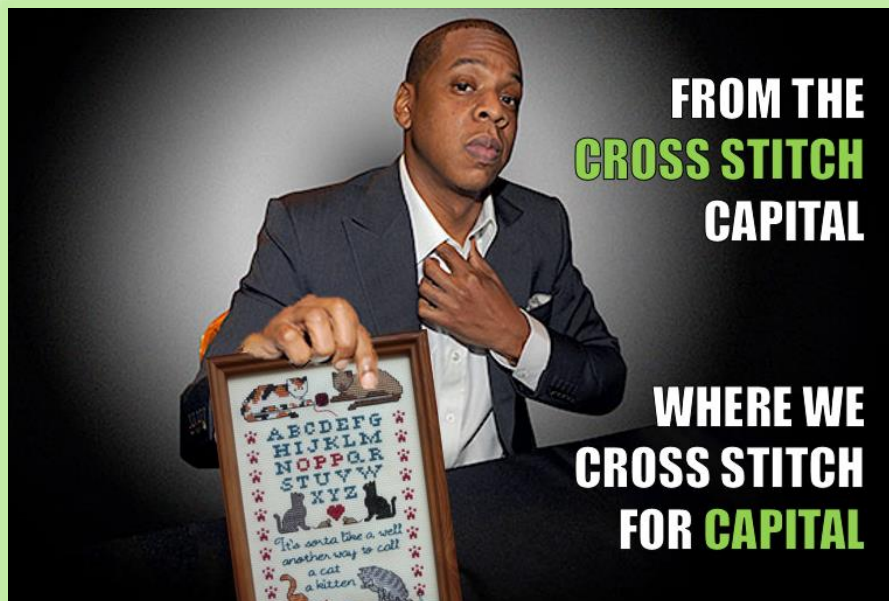
## (\*) Blended Entries:

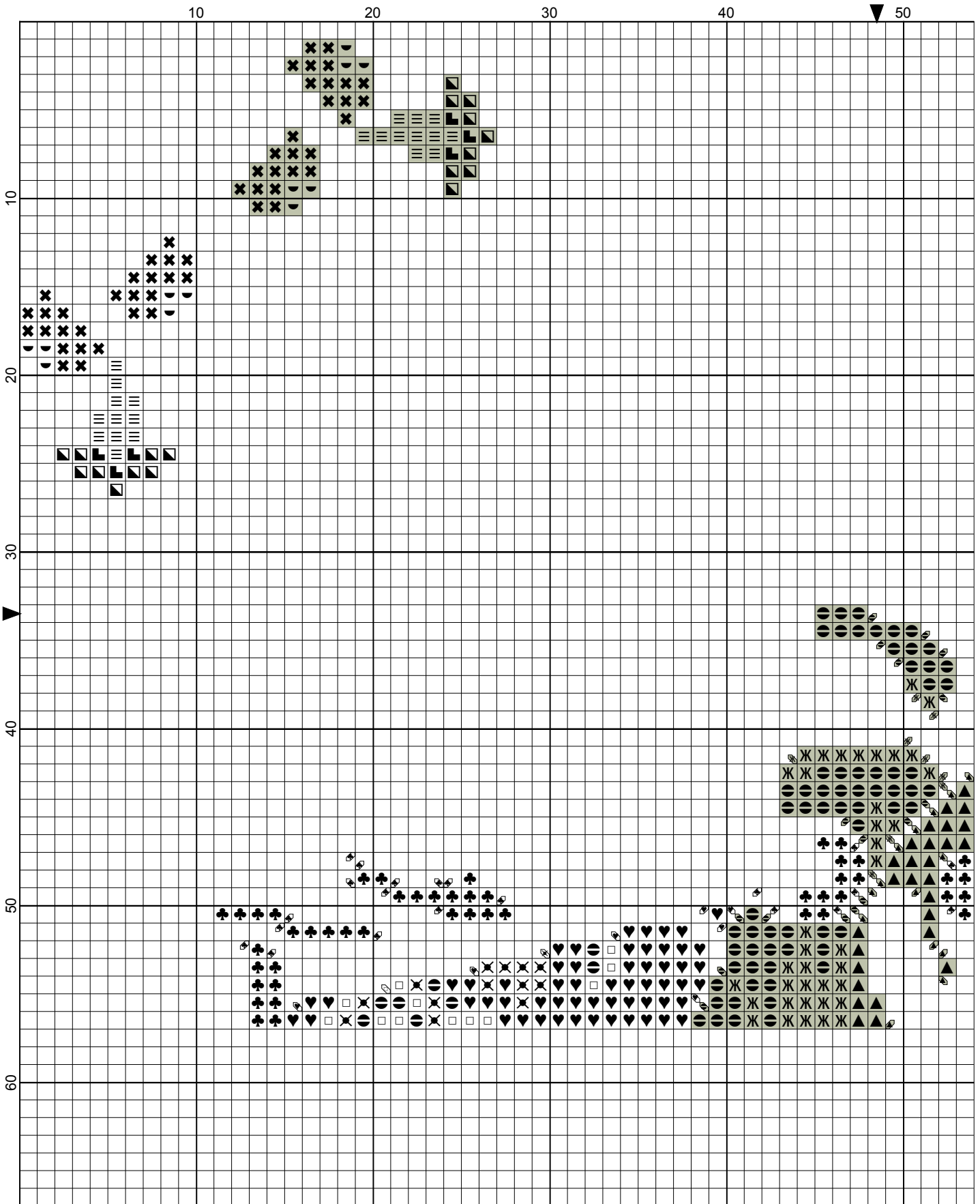
■	DMC-435 & DMC-840	(DMC Cotton-brown - vy lt blended with DMC Cotton-beige brown - md)
■	DMC-436 & DMC-435	(DMC Cotton-tan blended with DMC Cotton-brown - vy lt)
■	DMC-645 & DMC-840	(DMC Cotton-beaver gray - vy dk blended with DMC Cotton-beige brown - md)
■	DMC-844 & DMC-310	(DMC Cotton-beaver gray - ul dk blended with DMC Cotton-black)
■	DMC-844 & DMC-839	(DMC Cotton-beaver gray - ul dk blended with DMC Cotton-beige brown - dk)

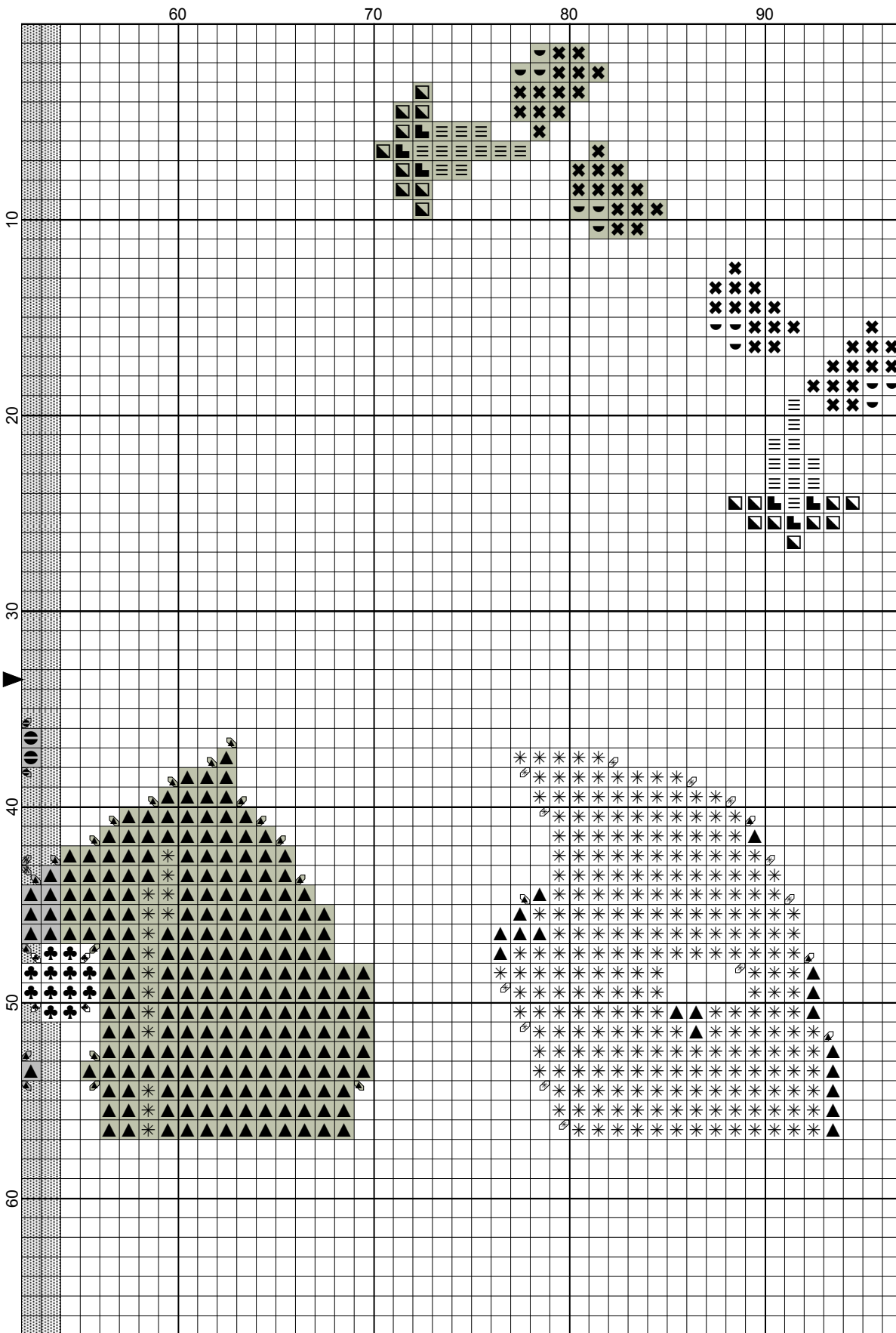
## Special Notes for Pattern 2:

All cross stitches are made with two threads. Blended Entries use one of each of the threads listed on the chart. Pattern 2 uses both cross stitches and quarter stitches.

**\*\*The squares you have previously stitched are indicated in light gray on this pattern.\*\***







Stotch Fine Needleart