

It begins...

Steotchalong 2015 - Pattern 1 of 8

Author: Emily & Matt Fitzpatrick
Copyright: Steotch Fine Needleart
Website: steotch.com
Grid Size: 97W x 67H
Design Area: 4.56" x 3.50" (73 x 56 stitches)



Legend:

	[2] DMC 312 navy blue - lt		[2] DMC 726 topaz - lt		[2] DMC 844 beaver gray - ul dk
	[2] DMC 645* beaver gray - vy dk		[2] DMC 727 topaz - vy lt		[2] DMC 844* beaver gray - ul dk
	[2] DMC 645 beaver gray - vy dk		[2] DMC 794 cornflower blue - lt		[2] DMC 3733 dusty rose

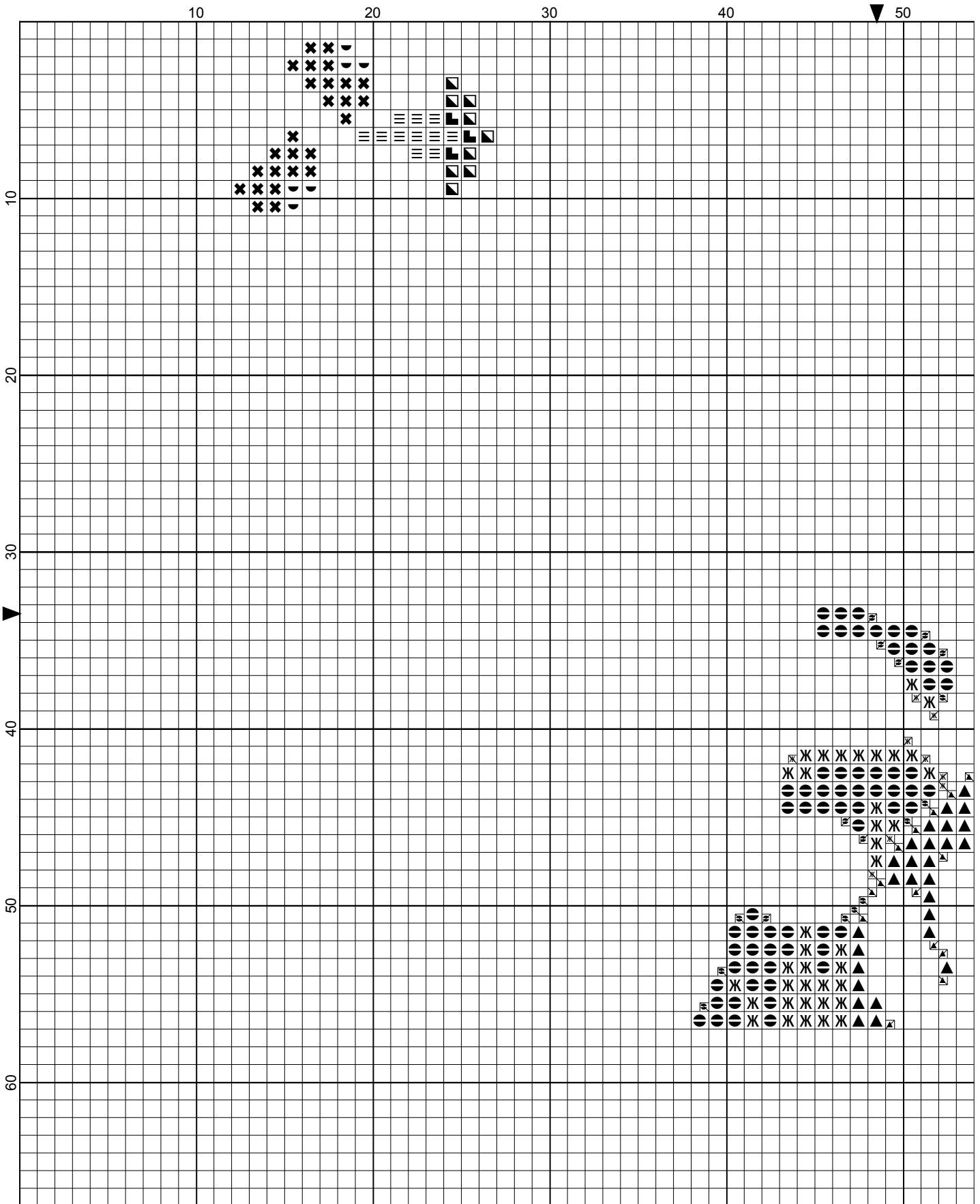
(*) Blended Entries:

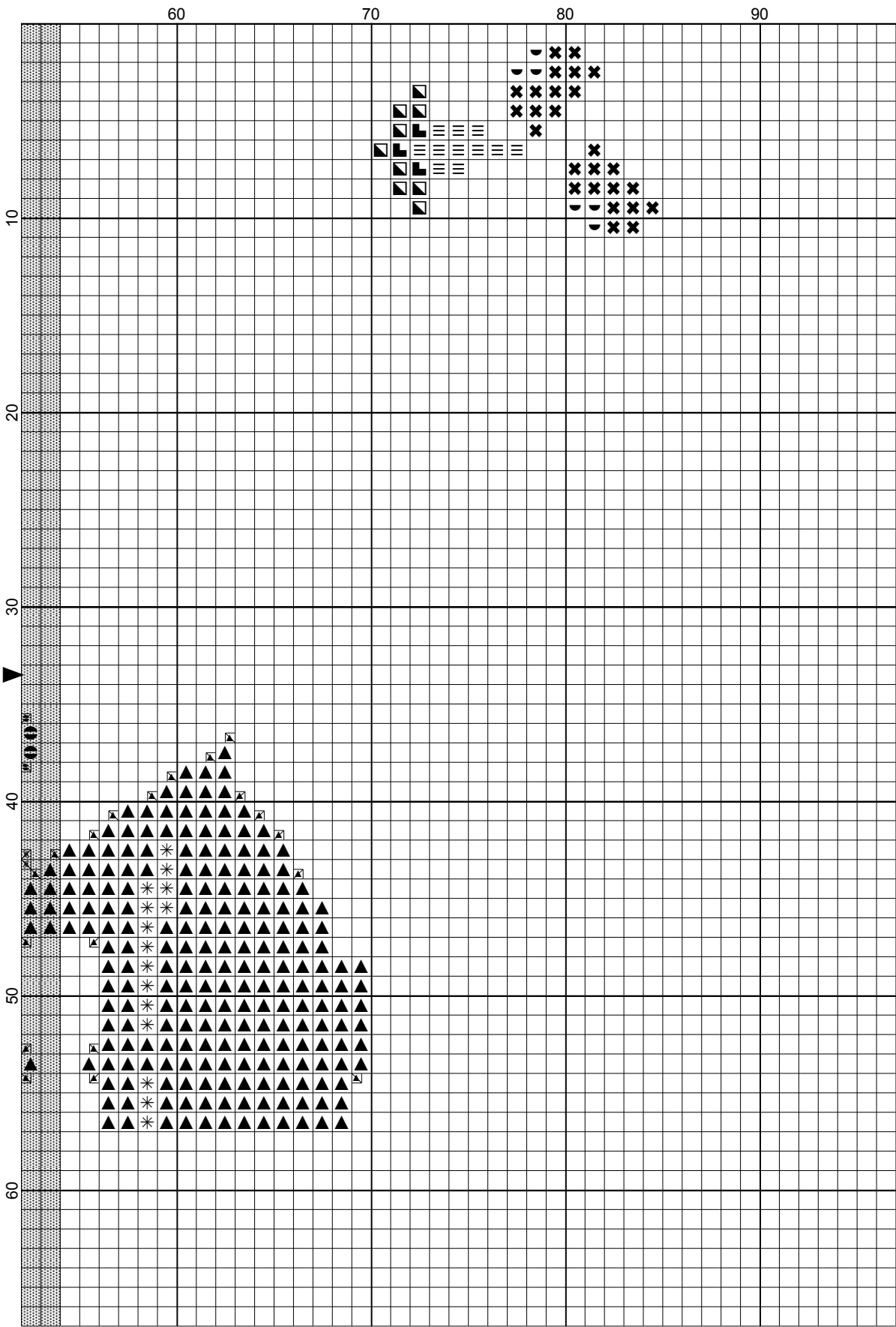
DMC-645 & DMC-840 (DMC Cotton-beaver gray - vy dk blended with DMC Cotton-beige brown - md)
 DMC-844 & DMC-839 (DMC Cotton-beaver gray - ul dk blended with DMC Cotton-beige brown - dk)

Special Notes for Pattern 1:

All cross stitches are made with two threads. For the Blended Entries, use one of each of the two colors listed to stitch those squares on the pattern.







Stoetch Fine Needleart