

## Steotchalong 2014: Pattern 6

---

**Author:** Emily & Matt Fitzpatrick  
**Copyright:** Steotch Fine Needleart  
**Website:** steotch.com  
**Fabric:** 16-count Aida  
**Grid Size:** 97W x 67H  
**Design Area:** 5.94" x 4.06" (95 x 65 stitches)

#Steotchalong  
2

### Legend:

▲ □ [2] DMC White white

### Backstitch Lines:

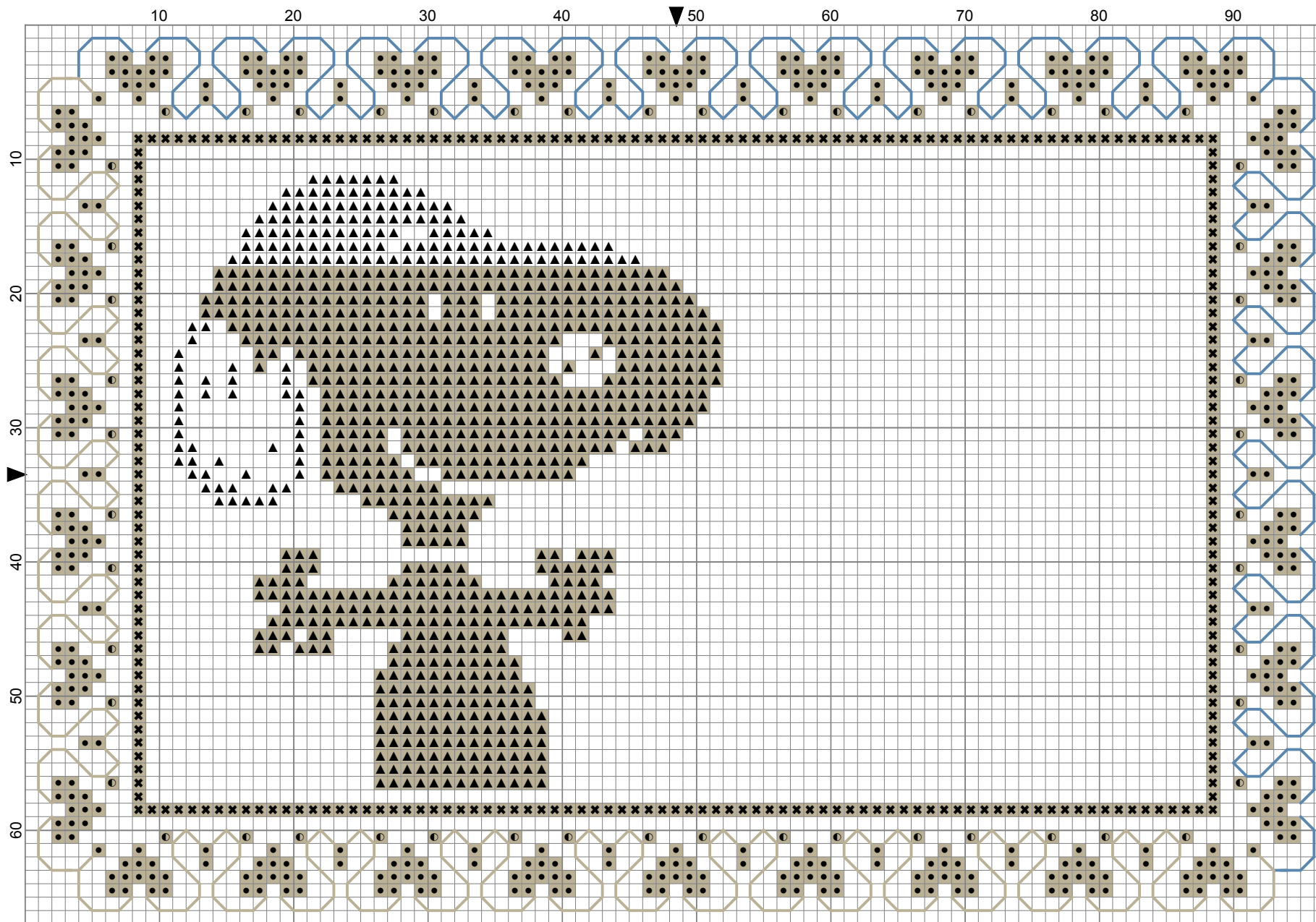
— DMC-826 blue - md

### Special Notes for this Pattern:

All cross stitches are made with two threads. Backstitch the border (826) with one thread.



Steotchalong 2014: Pattern 6 by Emily & Matt Fitzpatrick



Steotch Fine Needleart