

Steotchalong 2014 - Pattern 5

Author: Emily & Matt Fitzpatrick
Copyright: Steotch Fine Needleart
Website: steotch.com
Fabric: 16-count Aida
Grid Size: 97W x 67H
Design Area: 5.88" x 4.00" (94 x 64 stitches)

#Steotchalong
2

Legend:

▲ □ [2] DMC White white

Backstitch Lines:

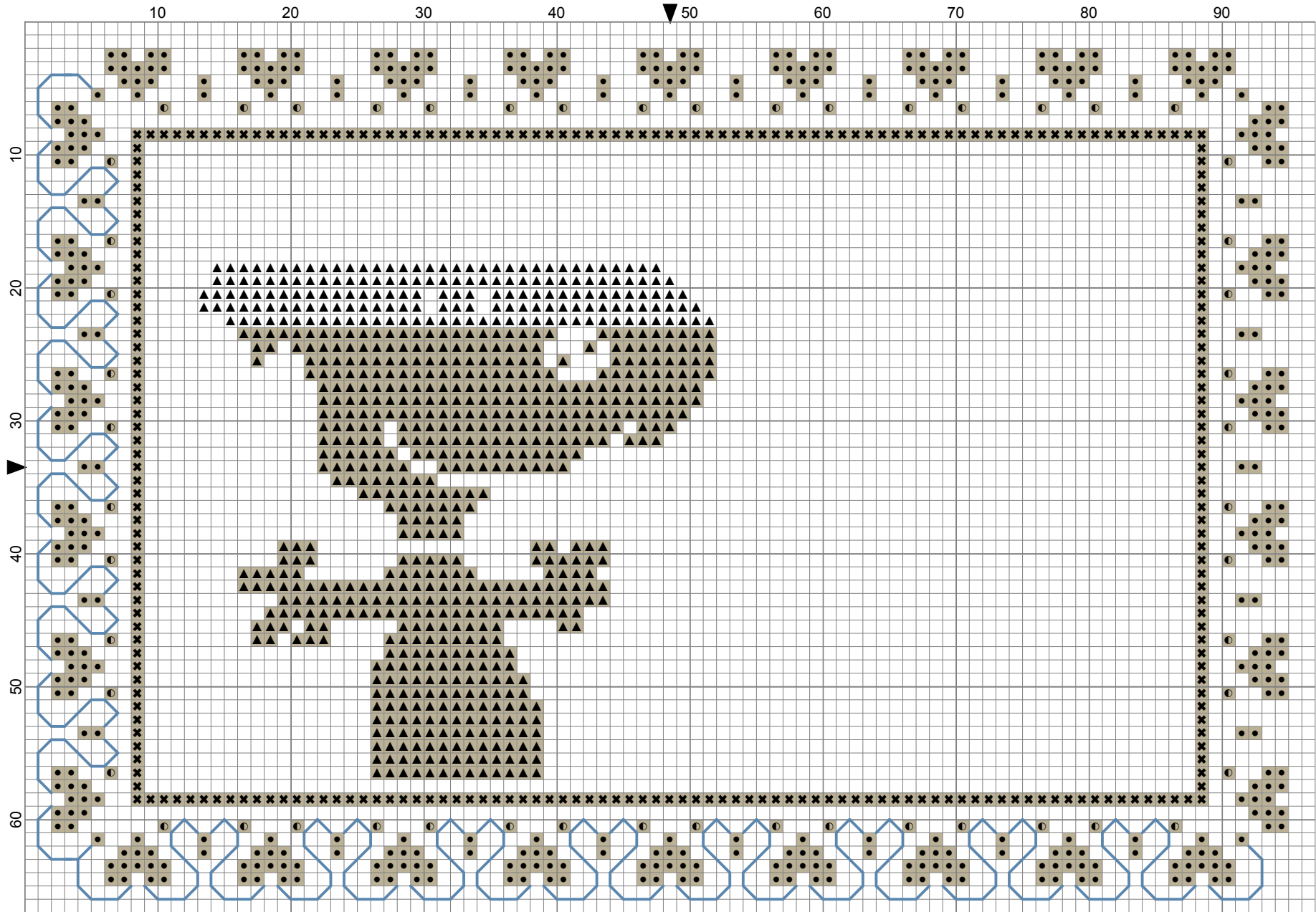
— DMC-826 blue - md

Special Notes for this Pattern:

All cross stitches are made with two threads. Backstitch the border (826) with one thread.



Steotchalong 2014 - Pattern 5 by Emily & Matt Fitzpatrick



Steotch Fine Needleart