

## Steotchalong 2014 - Pattern 4

---

**Author:** Emily & Matt Fitzpatrick  
**Copyright:** Steotch Fine Needleart  
**Website:** steotch.com  
**Fabric:** 16-count Aida  
**Grid Size:** 97W x 67H  
**Design Area:** 5.81" x 3.94" (93 x 63 stitches)

### Legend:

 [2] DMC 702 kelly green       [2] DMC White white  
 [2] DMC 726 topaz -lt

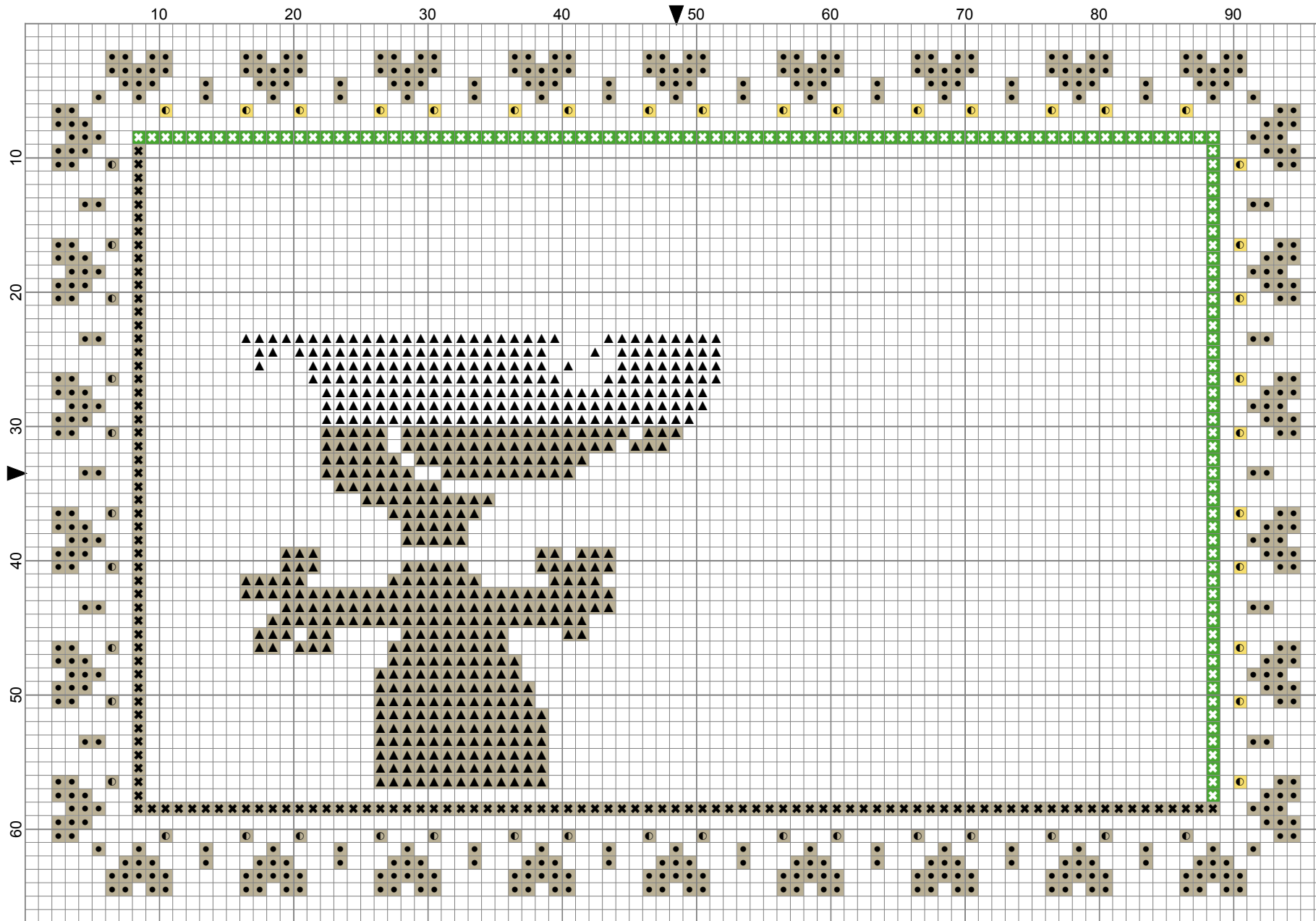
### Special Notes for this Pattern:

All cross stitches are made with two threads.

#Steotchalong  
2



Steotchalong 2014 - Pattern 4 by Emily & Matt Fitzpatrick



Steotch Fine Needleart